

NANO LIGHTS

Powerful compact illumination. Fits all space-demanding applications.



COMPACT SIZE

HOMOGENOUS LIGHT FIELD

UNIVERSAL MOUNTING

1D AND 2D CODES ILLUMINATION

CONFIGURATION

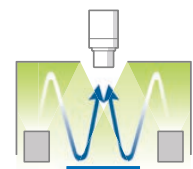
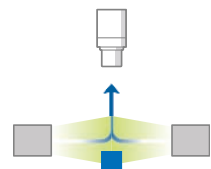
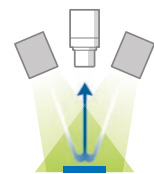
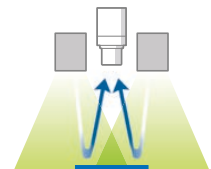
Ordering Code

LL -	30	R	60
Linear light	light length	wavelength	light length

LL-30

model series	active illumination area	wavelength	LED radiation angle
LL-30R60	30 × 10 mm	633 nm	60°
LL-30W120	30 × 10 mm	white	120°
LL-30B120	30 × 10 mm	470 nm	120°
LL-30G120	30 × 10 mm	525 nm	120°
LL30IR50	30 × 10 mm	850 nm	50°

WAYS OF USE



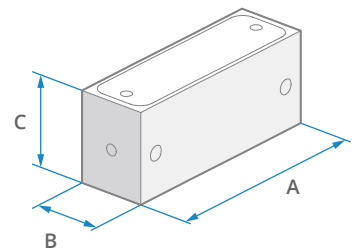
BASIC ELECTRIC PARAMETERS

Model		LL-30IR50	LL-30R60	LL-30G120	LL-30B120	LL-30W120
Voltage Span	U_n					
Nominal Voltage	U_{jm}	24 V	24 V	24 V	24 V	24 V
Nominal Current	I_{jm}					
Max. Current	I_{max}	50 mA	50 mA	50 mA	50mA	50 mA
Trigger Voltage	U_{trig}	N/A	N/A	N/A	N/A	N/A
Trigger Current	I_{trig}	N/A	N/A	N/A	N/A	N/A
Input	P	1,2 W	1,2 W	1,2 W	1,2 W	1,2 W

Model		LL-120W120	LL-120B120	LL-120G120	LL-120R60	LL-120IR50
Voltage Span	U_n	23-28 V	22-28 V	22-28 V	22-28 V	22-28 V
Nominal Voltage	U_{jm}	24 V	24 V	24 V	24 V	24 V
Nominal Current	I_{jm}	133 mA	150 mA	115 mA	90 mA	150 mA
Max. Current	I_{max}	150 mA	160 mA	150 mA	125 mA	160 mA
Trigger Voltage	U_{trig}	N/A	N/A	N/A	N/A	N/A
Trigger Current	I_{trig}	N/A	N/A	N/A	N/A	N/A
Input	P	3,5 W	3,6 W	2,8 W	2 W	3,6 W

DIMENSIONS AND WEIGHT

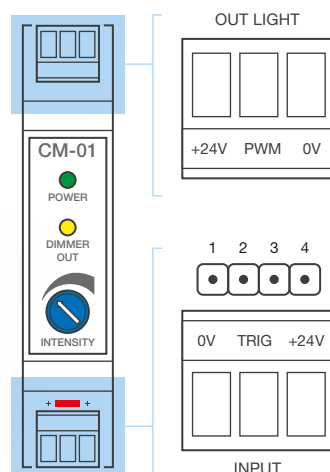
Model	A length (mm)	B width (mm)	C height (mm)	Active lighting area	Weight
LL-30...	38	15	20	30 × 10 mm	68 g



CONTROLLER CM-01

Universal illumination intensity controller

Trigger signal input



TERMINAL BOX OUTPUT "OUT LIGHT" – LIGHT CONNECTION

Terminal +24 V light positive pole

Terminal PWM PWM signal

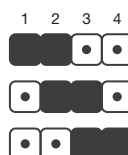
Terminal 0 V light negative pole

TERMINAL BOX INPUT "INPUT" – POWER SUPPLY AND CONTROL SIGNAL CONNECTION

Terminal +24 V positive pole of 24 V DC Power Supply

Terminal 0 V negative pole of 24 V DC Power Supply

Terminal TRIG trigger signal from camera, PLC, etc.



CM-01 MODE OPTION

1 – 2 Enable – constant light

2 – 3 Not used

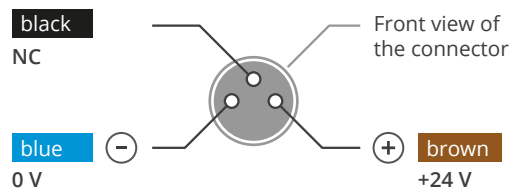
1 – 2 Invert trig – light during log 0 signal

OVERALL BASIC INFORMATION

Technical data

IP category	IP50
Protection Category	III
Ambient temperature	-20 - +40 °C
Isolation resistance	500 V
Housing material	Duralumin

CONNECTOR PIN ASSIGNMENT



ACCESSORIES INCLUDED

Transparent diffuser, diffuser with the opacity of 68 %, 5 m straight cable



clear 68%

OPTIONAL ACCESSORIES

Diffusers with the opacity of 38 % and 50 %, polarized diffuser, 5 m angular cable



38% 50%



Company Office

Smart View s.r.o.
Nivy 313
765 02 Otrokovice
Czech Republic
+420 601 575 797
+420 602 457 497
info@smartview.cz
www.smartview.cz

International Sales Slovakia

MTS, spol. s r.o.
Krivá 53
027 55 Krivá
Slovakia
+421 43 5819 111
mts@mts.sk
www.mts.sk