

## HIGH POWER BAR DEDICATED TO LOGISTICS APPLICATIONS

**SPECIALIZED LED** **BLUE**

OR

**SPECIALIZED LED** **RED**



- ✓ High brightness,
- ✓ homogeneous lighting,
- ✓ optimized colours for best image contrast

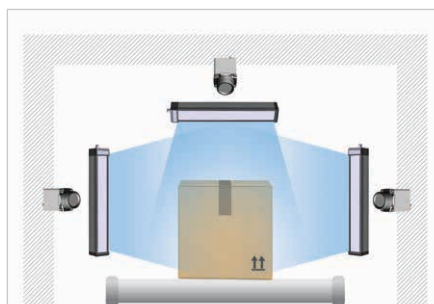


## EBAR LOGISTIX **BENEFITS** ▶ OPTIMIZE THE NUMBER OF **LIGHTS** & **CAMERAS**

The EBAR Logistix is a high brightness lighting solution, dedicated to identification applications in logistics. Using the EBAR Logistix, you can close the lens aperture, and consequently, increase the depth of field (from 1 to 2.5 meters).

This new lighting solution benefits from the Curve Concept, offering full homogeneity on the illuminated surface, including on the edges. With the EBAR Logistix, you can optimize the number of cameras and lights.

The EBAR Logistix is equipped with very specific high power LEDs – either blue or red – that help to increase label contrast on a cardboard box and code contrast on label.

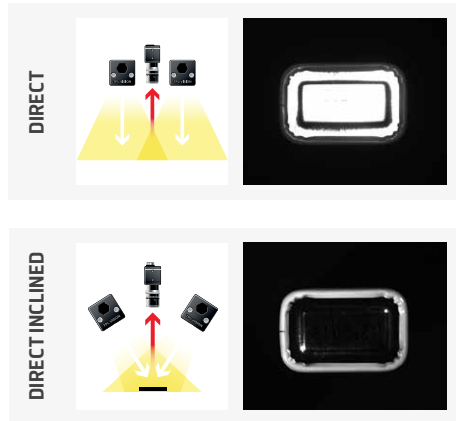


**Standard** configuration with **standard** lights.

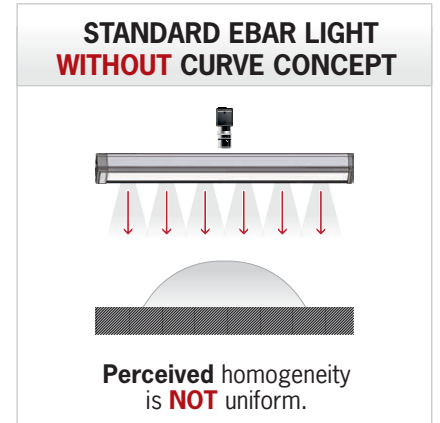
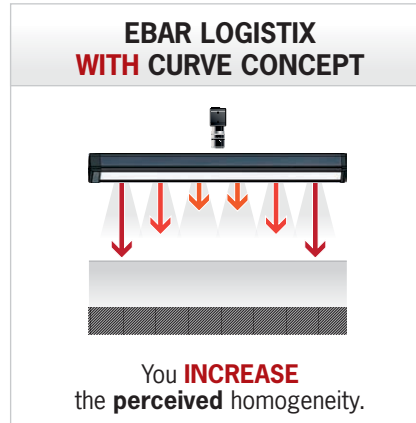


With the **EBAR LOGISTIX** and **CURVE** effect.

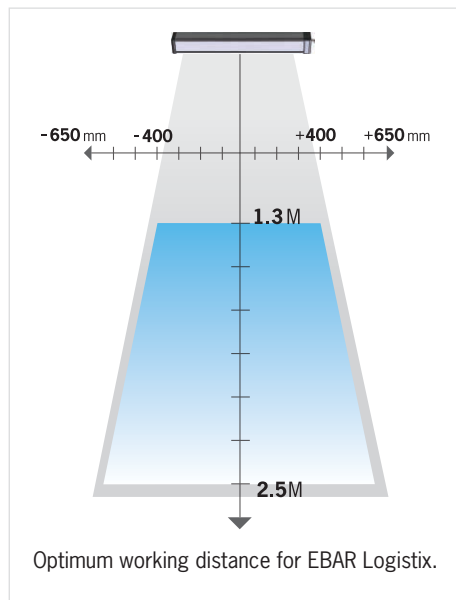
## LIGHTING METHODS



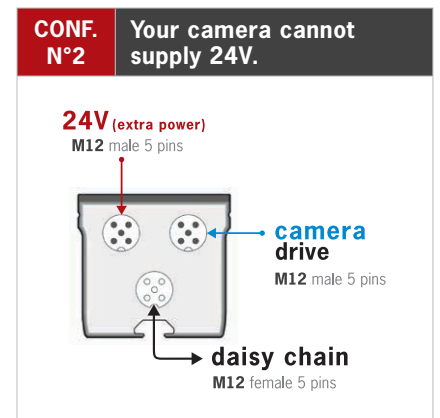
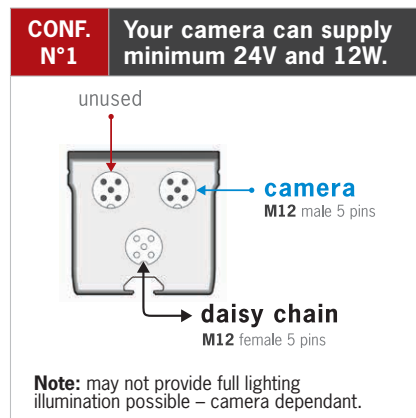
## CURVE CONCEPT



## LIGHTING AREA



## DIRECT CONNECTION



## TECHNICAL SPECIFICATIONS

Electronics	
Power supply	24 VDC ±10%
Average / Peak power consumption	12 W average / 120 W peak
Mode	Strobe only (Trigger PNP or NPN)
Overdrive	By default
Dimming	0V-10V = 100%-30%
Max rising & falling time	15 µs & 10 µs
Max strobe frequency	10 Hz
Wiring	standard M12 – 5 pins connector – 2x male + 1x female
Optics	
Colour	Special Blue or Special Red
Lens aperture	configured for 1.3 m to 2.5 m working distance
Mechanics	
Useful length	375 (mm)
Overall length	408 (mm)
Width x Height	47.6 x 45 (mm)
Body materials	Aluminum
Window	Anti-abrasion PMMA
Fixing	2 M4 nuts (supplied) to insert in the groove located on the back of the light or directly use M4 screws (not supplied)
Environment	
Operating temperature	-10° to +40°C / 80% of humidity without condensation. No thermal shock (max temperature variation: 10°C in 24h)
Storage temperature	-20° to +60°C / 80% of humidity without condensation. No thermal shock (max temperature variation: 10°C in 24h)
IP protection	IP 65
Labels	RoHS-CE-WEEE

# HOW TO BUILD YOUR REFERENCE

## REQUIRED SETTINGS

<b>EBAR</b>	<b>VERSION</b>	<b>COLOUR</b>
	<b>LOGISTI</b>	<b>X1</b> (BLUE) 
		<b>X2</b> (RED) 

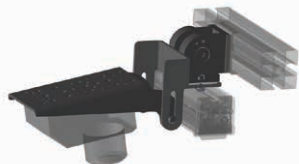
### EXAMPLES :

EBAR Logistix 375 mm blue LEDs  $\pm 17^\circ$  IP65 rating → **EBAR-LOGISTI-X1**

EBAR Logistix 375 mm red LEDs  $\pm 17^\circ$  IP65 rating → **EBAR-LOGISTI-X2**

## RELATED PRODUCTS

### Accessory for horizontal mounting



Ref: TPL-MOUNT-BAR-H1

### Accessory for vertical mounting



Ref: TPL-MOUNT-BAR-V1

### M12 female 5 pins cable



<b>2 meters</b>	Ref: C-M12-5P-2M
<b>5 meters</b>	Ref: C-M12-5P-5M
<b>10 meters</b>	Ref: C-M12-5P-10M

### M12 female/male 5 pins extension cable



<b>5 meters</b>	Ref: RA-M12-FM-5P-5M
<b>10 meters</b>	Ref: RA-M12-FM-5P-10M

Features and presentations liable to modifications without prior notice. A-1 version, 2019/06 Edition

### TPL VISION UK

Brenchley House - School Road - Charing - Kent TN27 0JW - UK  
Tel. +44 (0)1738 310 392 - contact@tpl-vision.co.uk

[www.tpl-vision.com](http://www.tpl-vision.com)



### Other available documents :

- PDF, DWG, DXF, IGS, STEP & X\_Y DRAWINGS
- USER'S GUIDE

**EBAR LOGISTIX**

