

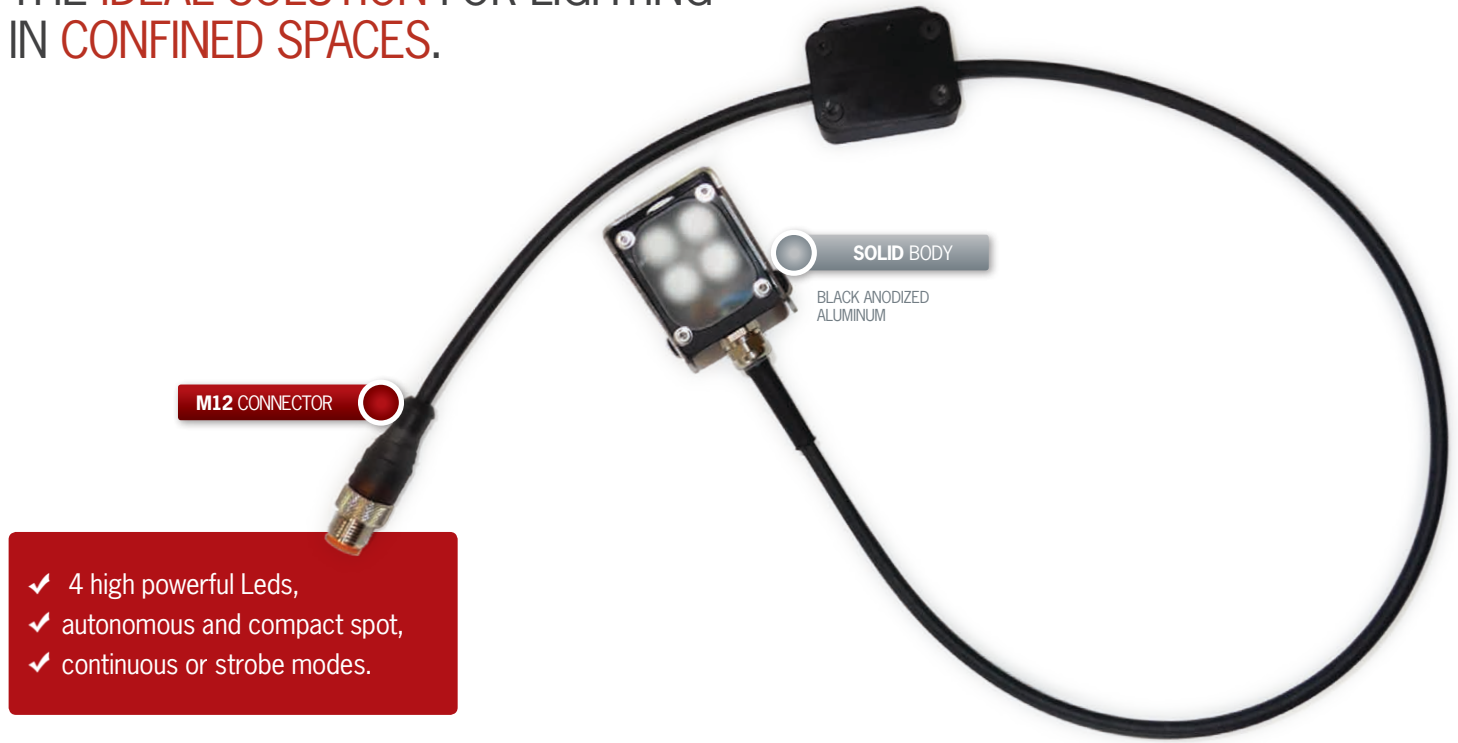


TSPOT 4

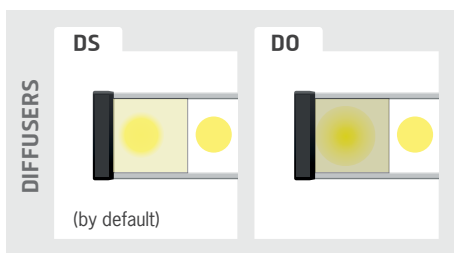
COMPACT & HIGH POWERFUL SPOTLIGHT

▷ HIGH POWERFUL LIGHTING ▷ LED ILLUMINATION ▷ AUTONOMOUS AND COMPACT SPOT LIGHT ▷ CONFINED SPACES ▷ QUALITY CONTROL WITH CAMERA

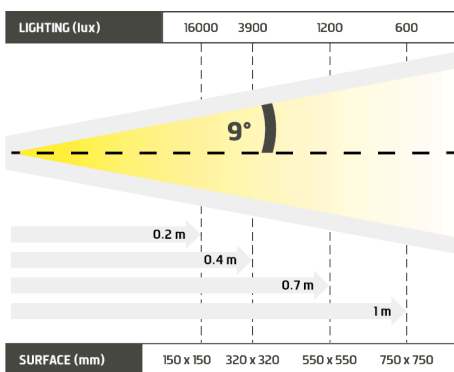
THE IDEAL SOLUTION FOR LIGHTING IN CONFINED SPACES.



- ✓ 4 high powerful Leds,
- ✓ autonomous and compact spot,
- ✓ continuous or strobe modes.



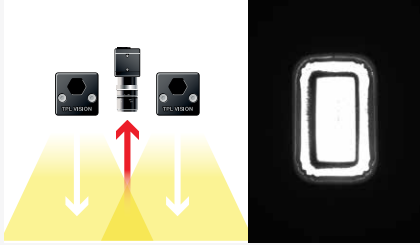
The TSPOT 4, highly powerful, is your camera's best partner to get an optimized control, in continuous or strobe mode. The TSPOT 4 is very easy to set up and quite autonomous, since it gets its own power supply with current control. Moreover, the fixing stirrup helps to orientate the lighting, in direct or darkfield ways. This spot is really appropriate wherever space is a real constraint. Either in directive intense lighting or in diffuse lighting, its 4 leds fit the highest paces of work.



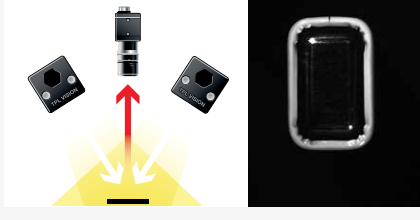
Distance	0.2m		0.4m		0.7m		1m	
TSPOT4-WHI	16000 lux	150 x 150 mm	3900 lux	320 x 320 mm	1200 lux	550 x 550 mm	600 lux	750 x 750 mm

Minimum guaranteed values (white lighting measures)

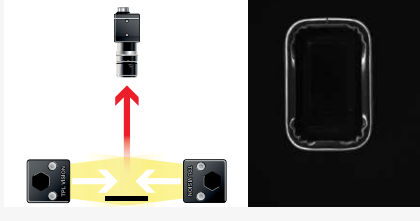
DIRECT LIGHTING



DIRECT INCLINED LIGHTING



DARKFIELD LIGHTING



TECHNICAL SPECIFICATIONS

Electronics	
Power supply	24 VDC ±10%
Functioning mode	Continuous or strobe according to wiring
Maximum rising time	1.5ms
Maximum falling time	1ms
Wiring	M12 4 poles male connector
Max. Consumption (W)	6
Optics	
Colour	White, Red, Green, Blue, Infrared
Number of Leds	4
Lens by default	± 9°
Mechanics	
Dimensions	38 x 30 x 28 mm
Weight (g)	150 g
Body materials	Black anodized Aluminum
Diffuser	Satin diffuser
Fixing	2 holes for CHC M3 screws (not provided)
Included add-ons	Fixing stirrup
Environment	
Operating temperature	0 - 40°C
Storage temperature	0 - 60°C
IP protection	IP 66
Labels	RoHS-CE-WEEE

RELATED PRODUCTS

Ask for your add-ons, customized for the TSPOT 4 :

- wiring
- diffusers
- fixing hardware
- safety glasses

MY CONTACT

.....

.....

.....

.....

.....

HOW TO BUILD YOUR REFERENCE

REQUIRED SETTINGS		OPTION	
TSPOT4			
COLOUR		OPTIC ANGLE	
WHI	<input type="checkbox"/>	9	± 9°
630	<input type="checkbox"/>	NL	NO LENS
525	<input type="checkbox"/>		
470	<input type="checkbox"/>		
850	<input type="checkbox"/>		
		DIFFUSER OPTION	
		DS	SATIN
		DO	OPAQUE
		POL	POLARIZER *

EXAMPLES :
 TSPOT 4 WHITE LEDS ± 9° SATIN DIFFUSER : TSPOT4-WHI-9-DS
 TSPOT 4 RED LEDS ± 9° OPAQUE DIFFUSER : TSPOT4-630-9-DO
 TSPOT 4 BLUE LEDS NO LENS SATIN DIFFUSER : TSPOT4-470-NL-DS

* EXCEPT FOR INFRARED 850

Features and presentations liable to modifications without prior notice. C-1 version, 2019/06 Edition

TPL VISION UK

Brenchley House - School Road - Charing - Kent TN27 0JW - UK
 Tel. +44 (0)1738 310 392 - contact@tpl-vision.co.uk

www.tpl-vision.com



Other available documents :

- PDF, DWG, DXF, IGS, STEP & X_Y DRAWINGS
- USER'S GUIDE

