



TRING

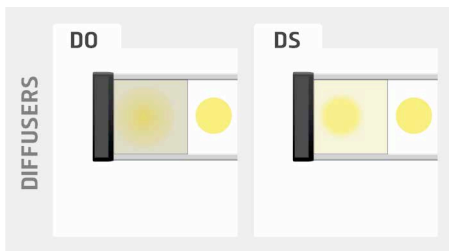
AUTONOMOUS COMPACT RING - 9 LEDS

▷ RING LED LIGHTING ▷ COMPACT AND AUTONOMOUS LIGHT ▷ HIGH POWERFUL LED ▷ MACHINE VISION SYSTEMS ▷ CONFINED ENVIRONMENT

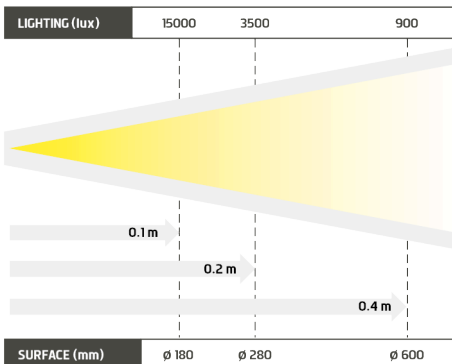
COMPACT & POWERFUL RING, FOR CONFINED ENVIRONMENTS



- ✓ 9 high powerful leds,
- ✓ current regulation on cable,
- ✓ continuous and strobe modes.

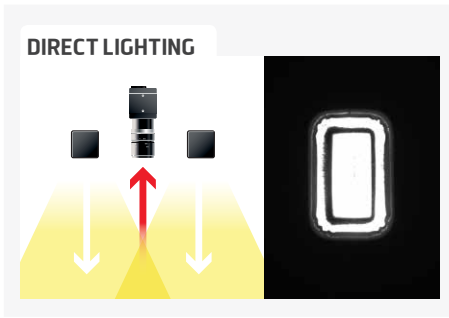


Equipped with 9 high powerful leds, the TRING is a miniature ring specially designed for the diffuse lighting of circular areas. It has a current control power supply that regulates the current intensity and consequently guarantees the lighting stability. Thanks to its M12 connector, it can be easily connected to any kind of production lines. Either in continuous or in strobe mode, the TRING perfectly goes along with a camera dedicated to quality control tasks: code reading, presence/absence checking, surface control...



| Distance | 0.1m | | 0.2m | | 0.4m | |
|----------|-----------|----------|----------|----------|---------|---------|
| TRING | 15000 lux | ∅ 180 mm | 3500 lux | ∅ 280 mm | 900 lux | ∅ 600mm |

Minimum guaranteed values (white lighting measures)



TECHNICAL SPECIFICATIONS

| Electronics | |
|-----------------------|--|
| Power supply | 24 VDC ±10% |
| Functioning mode | Continuous or strobe according to wiring |
| Maximum rising time | 1.5 ms |
| Maximum falling time | 1 ms |
| Wiring | M12 4 poles male connector |
| Max. consumption | 6 W |
| Optics | |
| Colour | White, Red, Green, Blue, Infrared |
| Number of Leds | 9 |
| Lens by default | No lenses |
| Mechanics | |
| Dimensions | Ø Int : 38 mm - Ø Ext : 66 mm |
| Width | 15 mm |
| Weight | 70 g |
| Materials | Black anodized aluminum |
| Diffuser | Satin diffuser |
| Fixing | 2 M3 screws |
| Environment | |
| Operating temperature | 0 - 40°C |
| Storage temperature | 0 - 60°C |
| IP protection | IP 40 |
| Labels | RoHS-CE-WEEE |

RELATED PRODUCTS

Ask for your add-ons, customized for the TRING:

- wiring
- diffusers
- fixing hardware
- safety glasses

MY CONTACT

.....

.....

.....

.....

.....

HOW TO BUILD YOUR REFERENCE

| REQUIRED SETTINGS | | OPTION |
|-------------------|------------------------------|-----------------------------|
| TRING | COLOUR | DIFFUSER OPTION |
| | WHI <input type="checkbox"/> | DS SATIN |
| | 630 <input type="checkbox"/> | DO OPAQUE |
| | 525 <input type="checkbox"/> | DT TRANSPARENT ¹ |
| | 470 <input type="checkbox"/> | POL POLARIZER ² |
| | 850 <input type="checkbox"/> | |

1 : NO DIFFUSION
2 : EXCEPT FOR INFRAROUGE 850

EXAMPLES :
 TRING RED LED SATIN DIFFUSER : → TRING-630-DS
 TRING WHITE LED OPAQUE DIFFUSER : → TRING-WHI-DO

Features and presentations liable to modifications without prior notice. C-2 version, 2019/06 Edition

TPL VISION UK

Brenchley House - School Road - Charing - Kent TN27 0JW - UK
 Tel. +44 (0)1738 310 392 - contact@tpl-vision.co.uk

www.tpl-vision.com



Other available documents :

- PDF, DWG, DXF, IGS, STEP & X_Y DRAWINGS
- USER'S GUIDE

