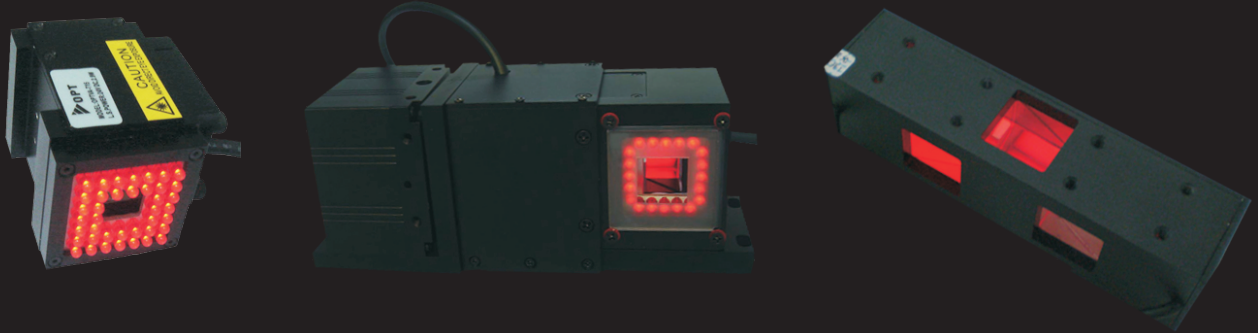


VA Lights OPT-VA series



Product Features

- 1 Alignment with high accuracy and high speed; large field of view
- 2 Compact design for an easy image acquisition
- 3 High brightness

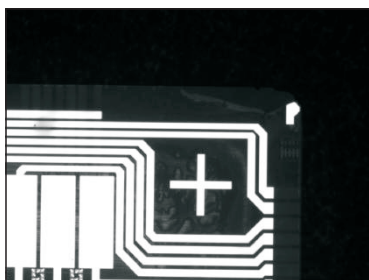
Application Cases

- ◆ Alignment in fully automatic print inspection

Model Table

Model	VA-S	VA-T	VA-D	VA-U	Resulting Image
Characteristics	High-speed alignment	Large FOV; ideal for integrated inspection	High-speed positioning; large FOV; ideal for integrated inspection	High-speed positioning; large FOV; ideal for integrated inspection	
Camera connection	USB/IEEE1394/GigE			--	 ■ mark point alignment
Laser integrated for 3D applications	Optional			Optional	
Illumination	Coaxial light + ring light			Coaxial light or ring light (optional)	
Field of view	Available from 4 x 3mm ² to 12 x 9mm ²			--	
Magnification	Available from 0.5x to 2x			--	
Max. resolution	1280x1024			--	
Power consumption	2.9W			2.0 W	

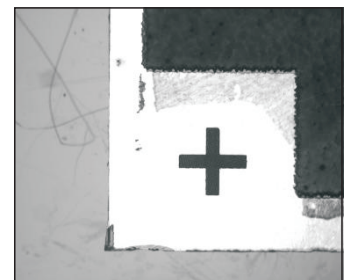
Application Example



Mobile back light localization



FPCB Marker point localization



Glass marker point localization