

Parallel Spot Light OPT-PL series



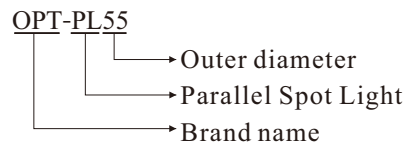
Product Features

- 1 Telecentric optical design, highly parallel light emitting
- 2 Can greatly increase the image contrast of the object border, reach higher accuracy
- 3 Customization acceptable for installation holes position
- 4 Can effectively increase the depth of view when work with telecentric lens

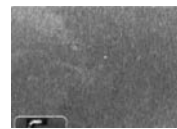
Application Cases

- ◆ Inspection of the burr on edges of rotary parts
- ◆ Inspection of gap plugs
- ◆ Inspection of card surface
- ◆ Geometric measurement of metal parts profile

Selection Guide

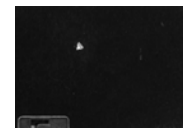


Other Light



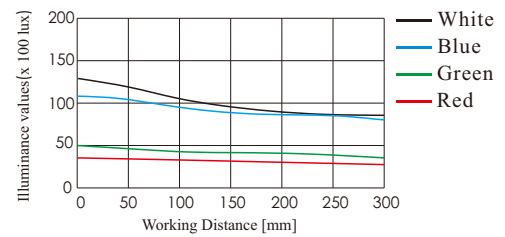
It's difficult to get clear image for reflective surface

PL70 Parallel Spot Light

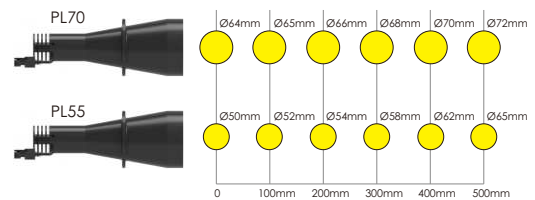


It's easy to get clear image for reflective surface

Parallel Spot Light Intensity Chart



Spot range of PL70 and PL55 at 500 mm Working Distance



Customization Options



Color



Power

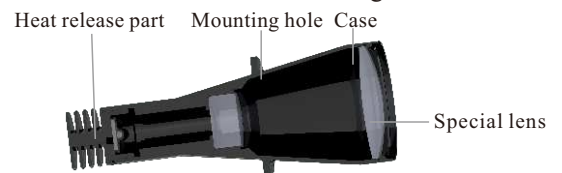


Mounting



Connector

Section Structure Drawing



Application Example

Measurement of metal parts profile



Original Image



Illuminated



Result Image

Model Table

No.	Model	Output ●	Output ● ● ●	Recommended controller
1	OPT-PL35	0.4A/0.9W	0.4A/1.3W	DPA0405
2	OPT-PL45	0.7A/7.2W	0.7A/8.5W	DPA0405
3	OPT-PL50	0.4A/0.9W	0.4A/1.4W	DPA0405
4	OPT-PL55	0.5A/6W	0.25A/3W	DPA1012
5	OPT-PL70	0.5A/6W	0.25A/3W	DPA1012

Dimensional Drawings [mm]

