

## Model Table

No.	Model	Output <span style="color:red">●</span>	Output <span style="color:blue">●</span> <span style="color:green">●</span> <span style="color:red">●</span>	Recommended controller
1	OPT-LI4033	24V/0.5W	24V/1.6W	OPT-DPA1024E
2	OPT-LI5218	24V/0.8W	24V/1.8W	OPT-DPA1024E
3	OPT-LI6022	24V/0.7W	24V/1.8W	OPT-DPA1024E
4	OPT-LI8532	24V/1.2W	24V/2.8W	OPT-DPA1024E
5	OPT-LI9022	24V/0.6W	24V/2.8W	OPT-DPA1024E
6	OPT-LI10810	24V/0.4W	24V/0.8W	OPT-DPA1024E
7	OPT-LI11222	24V/1.4W	24V/3.8W	OPT-DPA1024E
8	OPT-LI11830	24V/2.8W	24V/4.8W	OPT-DPA1024E
9	OPT-LI14030	24V/3.6W	24V/5.5W	OPT-DPA1024E
10	OPT-LI15020	24V/1.2W	24V/2.8W	OPT-DPA1024E
11	OPT-LI16030	24V/2.2W	24V/6.5W	OPT-DPA1024E

No.	Model	Output <span style="color:red">●</span>	Output <span style="color:blue">●</span> <span style="color:green">●</span> <span style="color:red">●</span>	Recommended controller
12	OPT-LI18022	24V/1.4W	24V/6W	OPT-DPA1024E
13	OPT-LI19030	24V/4.1W	24V/7.9W	OPT-DPA1024E
14	OPT-LI21222	24V/2.6W	24V/4.6W	OPT-DPA1024E
15	OPT-LI23034	24V/7W	24V/8.5W	OPT-DPA1024E
16	OPT-LI25030	24V/6.6W	24V/10.8W	OPT-DPA1024E
17	OPT-LI27022	24V/4.2W	24V/6.4W	OPT-DPA1024E
18	OPT-LI33037	24V/4.6W	24V/12W	OPT-DPA1024E
19	OPT-LI35030	24V/8.6W	24V/13.6W	OPT-DPA1024E
20	OPT-LI38037	24V/5.9W	24V/13.2W	OPT-DPA1024E
21	OPT-LI48031	24V/12.5W	24V/12.7W	OPT-DPA1024E
22	OPT-LI58041	24V/9.1W	24V/26.4W	OPT-DPA1024E

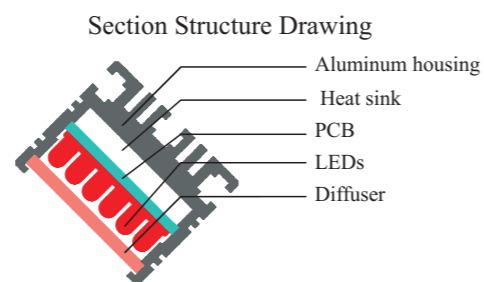
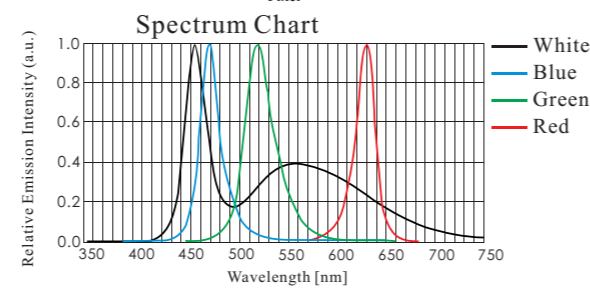
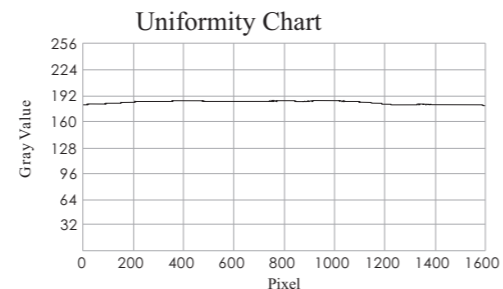
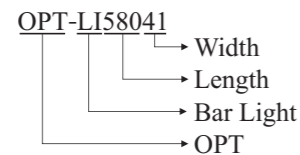
## Product Features

- Best choice for the cost-effective inspection of large objects.
- Illumination angle can be adjusted according to your requirements.
- Various colors can be combined to satisfy different demands; easy customization of size and colors.

## Application Cases

- ◆ Metal surface inspection
- ◆ Image scan
- ◆ Surface crack detection
- ◆ LCD panel inspection, etc.

## Selection Guide

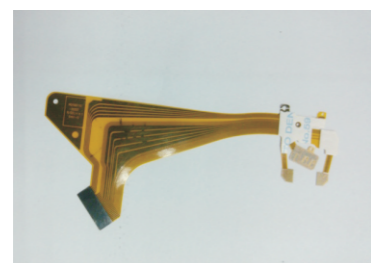


## Customization Options

- Color
- Number of LED rows
- Individual control of different sections
- Length
- Mount Method
- Light source combination
- Connector

## Application Example

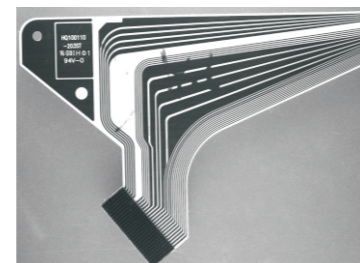
### FPC circuit inspection



Original Image



Illuminated



Result Image

## Dimensional Drawings [mm]

