

## Model Table

| No. | Model     | Output ● | Output ○●●  | Recommended controller |
|-----|-----------|----------|-------------|------------------------|
| 1   | OPT-COG50 | 1A/24W   | 0.63A/15.1W | OPT-DPA1024E           |
| 2   | OPT-COG80 | 2A/48W   | 2A/48W      | OPT-DPA6024            |

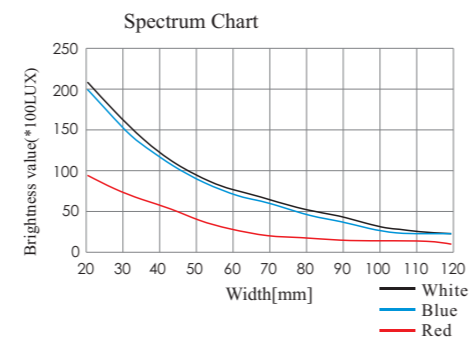
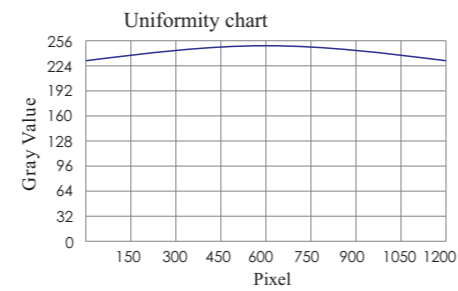
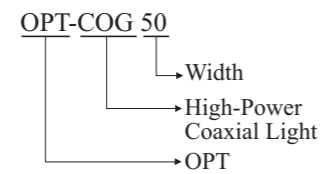
## Product Features

- Four (4) times higher intensity than the standard series
- High-power SMD LEDs
- High-transparency and -uniformity diffuser
- Heat-conductive plate and fan to release the heat
- Special view window and beam splitter

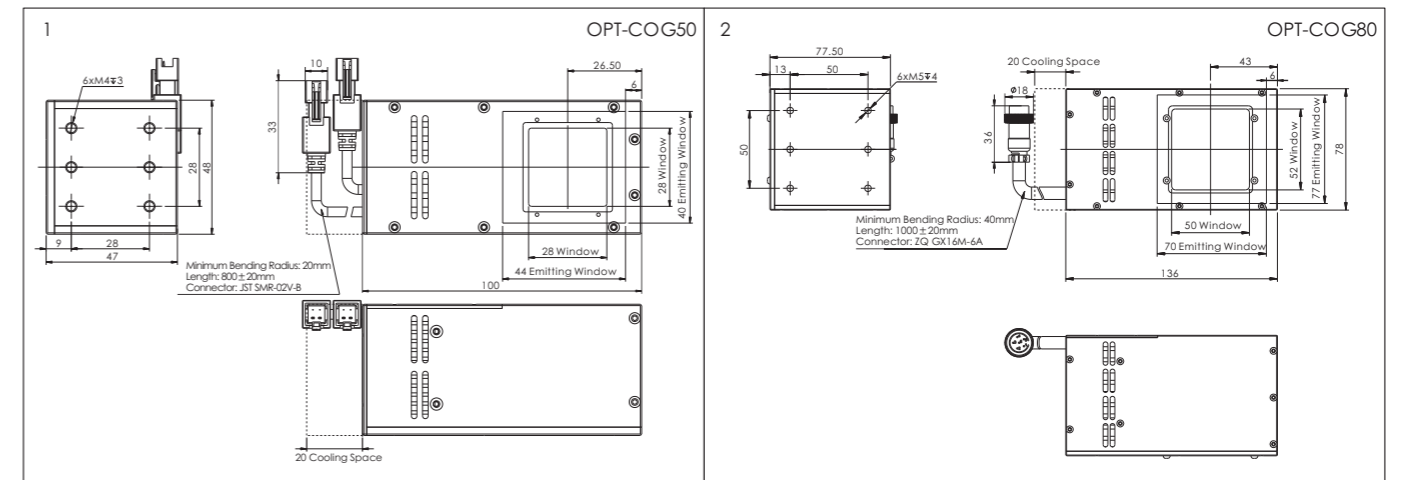
## Application Cases

- ◆ Inspection of reflective surface, including dents, damage, defects
- ◆ Printing circuit board characters and pattern inspection
- ◆ Marker point localization
- ◆ Inspection of glass surface and geometric measurement
- ◆ Recognition of QR codes

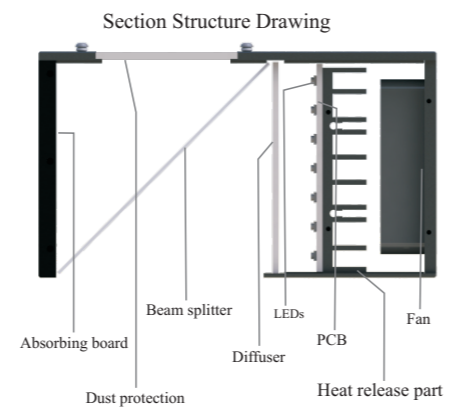
## Selection Guide



## Dimensional Drawings [mm]

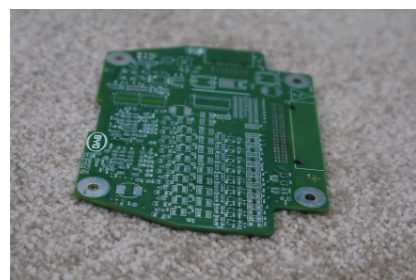


## Customization Options

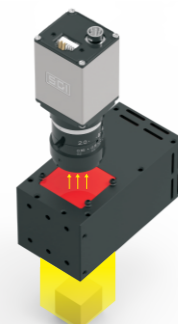


## Application Example

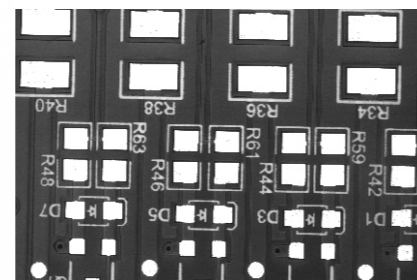
PCB soldering plate localization



Original Image



Illuminated



Result Image