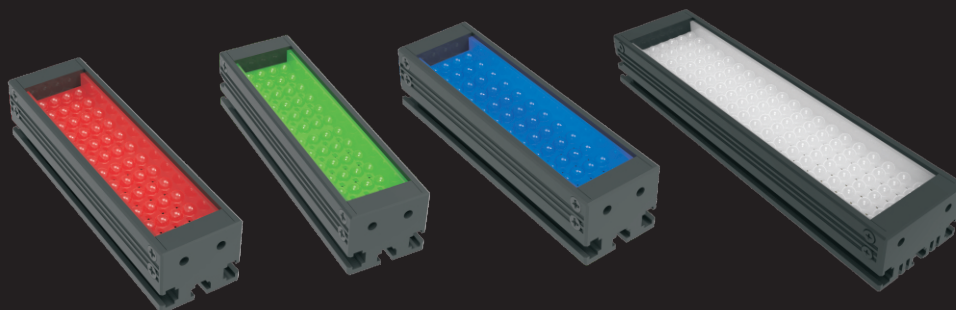
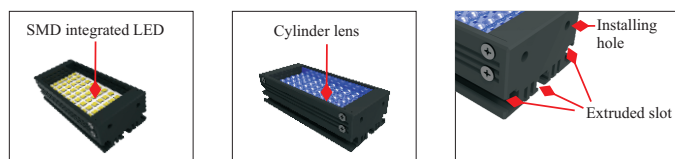


# High Intensity Bar Lights OPT-LIJ Series



## Product Features

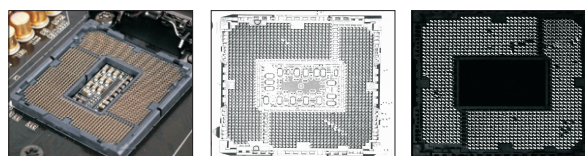
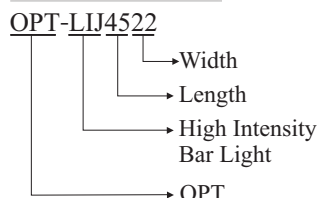
- 1 Lights based on SMD LEDs
- 2 Special cylinder lens design to improve uniformity
- 3 Higher LED intensity compared with other high-power bar lights
- 4 Can be installed by M3 threaded hole, and also can be installed in the three extrusion slots by inserting the M3 nut



## Application Cases

- ◆ OCR-Optical Character Recognition
- ◆ Bar code recognition
- ◆ Metal surface inspection
- ◆ Image scanning
- ◆ LCD board inspection

## Selection Guide

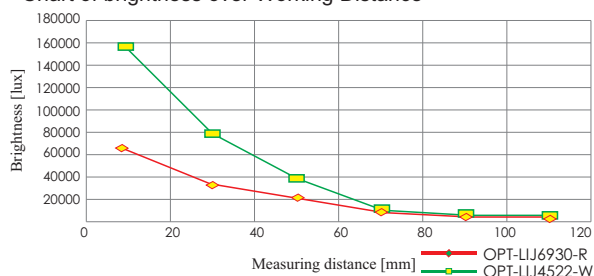


Detected Objects

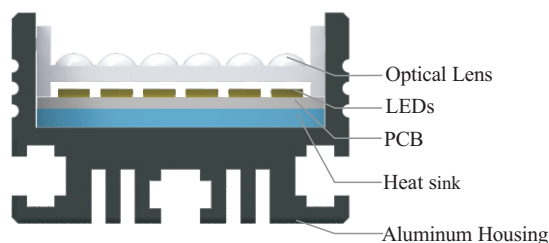
Other Light

LIJ12330-W

Chart of brightness over Working Distance



Sectional Structure Diagram



## Customization Options

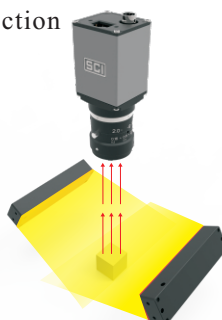


## Application Example

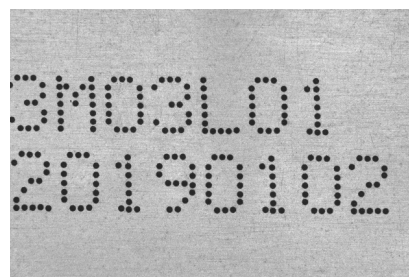
Inspected item: Packing box character inspection



Original Image

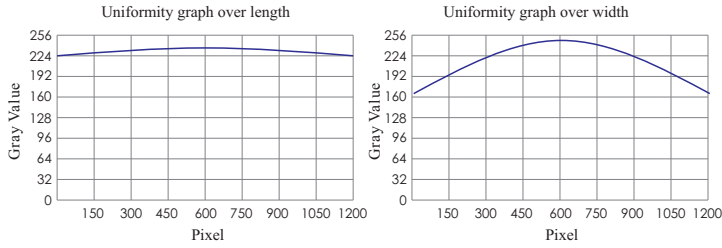


Illuminated

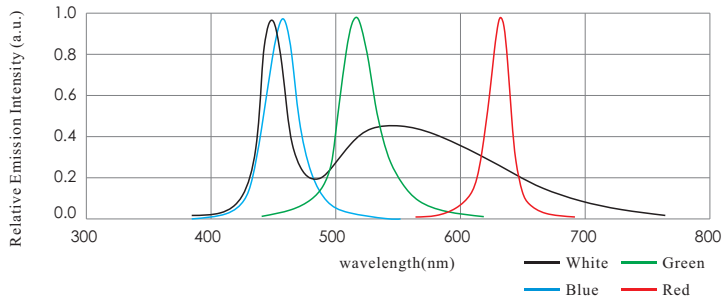


Result Image

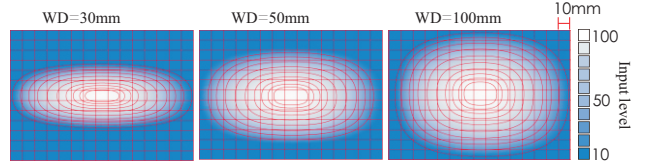
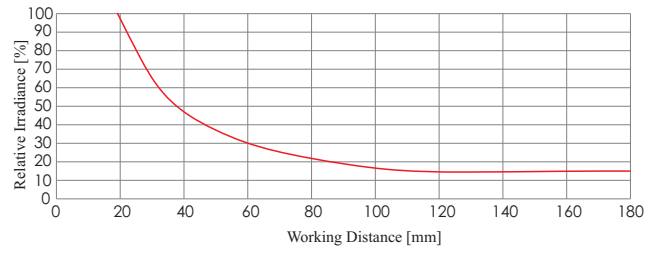
## Reference OPT-LIJ12330 Grey Value Sampling



Note: We used a CCD camera for the analysis of the grey values; above drawing shows the average grey values  
 \*Above data is just for reference, not for quality assurance



## Relative Emission Intensity, Uniformity Chart



LIJ6930-W Uniformity Drawing

## Model Table

No.	Model	Output ●	Output ○	Size	Recommended controller
1	OPT-LIJ4522	24V/0.4W	24V/2.3W	1	OPT-DPA1024E
2	OPT-LIJ7822	24V/2.0W	24V/3.2W	2	OPT-DPA1024E
3	OPT-LIJ11122	24V/2.9W	24V/4.8W	3	OPT-DPA1024E
4	OPT-LIJ6930	24V/0.9W	24V/2.7W	1	OPT-DPA1024E
5	OPT-LIJ12430	24V/1.9W	24V/5.7W	2	OPT-DPA1024E
6	OPT-LIJ23430	24V/3.9W	24V/10.5W	4	OPT-DPA1024E

Remarks: refer to the parameter chart to get the quantity of channel

## Dimensional Drawings [mm]

