



TSPOT 1

COMPACT & POWERFUL SPOTLIGHT

▷ LED ILLUMINATION ▷ CONFINED ENVIRONMENT ▷ AUTONOMOUS AND COMPACT SPOT LIGHT ▷ HIGH POWERFUL LIGHTING ▷ MACHINE VISION SYSTEM

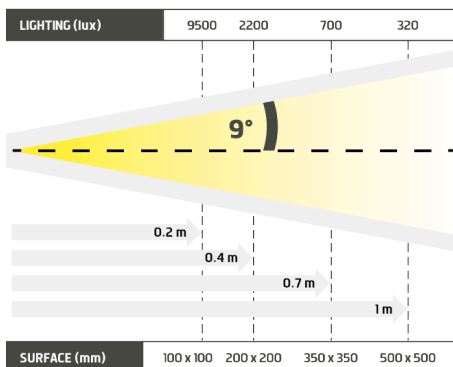
ALL THE LED LIGHTING POWER IN AN AUTONOMOUS SPOT.



- ✓ Powerful and compact,
- ✓ autonomous,
- ✓ continuous or strobe modes.

The TSPOT 1 is a very powerful compact spot. Among TPL Vision's products, it belongs to the easy-to-use family : equipped with its own power supply with current control, it can be easily set up. Its powerful led, in directive intense or diffuse lighting, enables controls

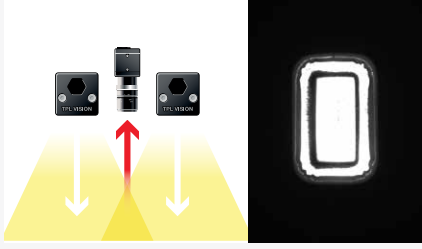
in confined spaces. It can be submitted to very high production rates. Everything in the TSPOT 1 has been studied for a simple and efficient use.



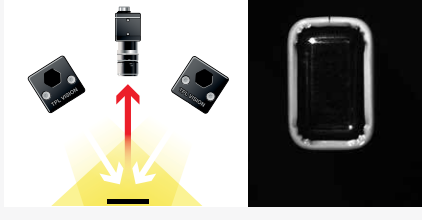
Distance	0.2m		0.4m		0.7m		1m	
TSPOT1-WHI	9500 lux	100 x 100 mm	2200 lux	200 x 200 mm	700 lux	350 x 350 mm	320 lux	500 x 500 mm

Minimum guaranteed values (white lighting measures)

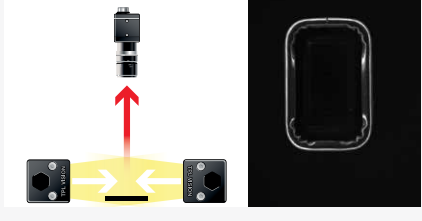
DIRECT LIGHTING



DIRECT INCLINED LIGHTING



DARKFIELD LIGHTING



TECHNICAL SPECIFICATIONS

Electronics	
Power supply	24 VDC \pm 10%
Functioning mode	Continuous or strobe according to wiring
Maximum rising time	1.5ms
Maximum falling time	1ms
Wiring	M12 4 poles male connector
Maximum power	8.5W
Optics	
Colour	White, Red, Green, Blue
Number of Leds	1
Lens by default	\pm 9°
Mechanics	
Dimensions	23 x 20 x 13 mm
Weight (g)	70 g with power supply
Body materials	Black anodized aluminum
Fixing	2 holes for CHC M3 screws (not provided)
Environment	
Operating temperature	0 - 40°C
Storage temperature	0 - 60°C
IP protection	IP 40
Labels	RoHS-CE-WEEE

RELATED PRODUCTS

Ask for your add-ons, customized for the TSPOT 1 :

- wiring
- safety glasses
- fixing hardware

MY CONTACT

.....

.....

.....

.....

.....

HOW TO BUILD YOUR REFERENCE

REQUIRED SETTINGS

TSPOT1	COLOUR	OPTIC ANGLE
	WHI <input type="checkbox"/>	9 \pm 9°
	630 <input type="checkbox"/>	
	525 <input type="checkbox"/>	
	470 <input type="checkbox"/>	

EXAMPLES :

TSPOT 1 WHITE LED \pm 9° :
 TSPOT 1 RED LED \pm 9° :
 TSPOT 1 BLUE LED \pm 9° :

RESULTS :

TSPOT1-WHI-9
 TSPOT1-630-9
 TSPOT1-470-9

Features and presentations liable to modifications without prior notice. B-1 version, 2019/06 Edition

TPL VISION UK

Brenchley House - School Road - Charing - Kent TN27 0JW - UK
 Tel. +44 (0)1738 310 392 - contact@tpl-vision.co.uk

www.tpl-vision.com



Other available documents :

- PDF, DWG, DXF, IGS, STEP & X_Y DRAWINGS
- USER'S GUIDE

