

ESSENTIAL EBAR FOOD

EASY TO USE & POWERFUL LED LIGHTING BAR

IP69K
PROTECTION

▶ LED LIGHTING SYSTEM ▶ MACHINE VISION APPLICATIONS ▶ FOOD INDUSTRY ▶ HIGH POWER LED ▶ DIRECT LIGHT ▶ QUALITY CONTROL WITH CAMERA

DIRECT HIGH POWER LED LIGHT FOR FOOD INDUSTRY.

ADVANTAGES OF THE EBAR FOOD

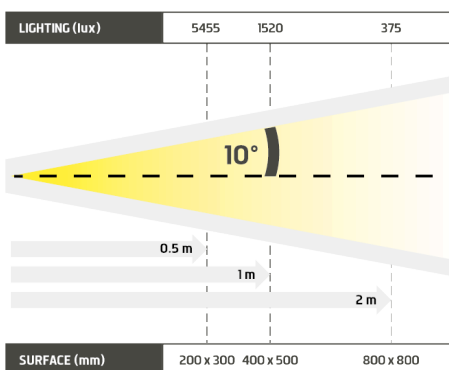
- ✓ Resists to **washing pressure** up to **100 bar**
- ✓ Faces **water temperatures** up to **80° C**
- ✓ **Reduces bacterium accumulation** thanks to smooth surfaces
- ✓ **Avoids steam appearance** during thermal variations
- ✓ **Integrated cables** (5m)



The Essential EBAR FOOD is a high power LED lighting solution. Equipped in a transparent tube (with smooth surfaces), it prevents material accumulation, and consequently bacterium appearance.

The waterproof fixing parts, made of 316L stainless steel, can cope with foam cleanings and high-pressure washes (up to 100 bar) and prevent any rust appearance. Fully immersed, the transparent tube doesn't degrade the light, including when there are thermal variations. Power and homogeneity are then preserved, for an optimized quality control.

Available in different colours and in multiple lengths, the Essential EBAR FOOD can work either in continuous or in strobe mode.

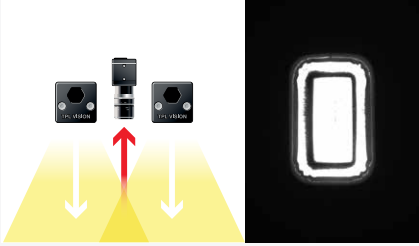


▶ Demo for EBAR5 (useful length : 121 mm)

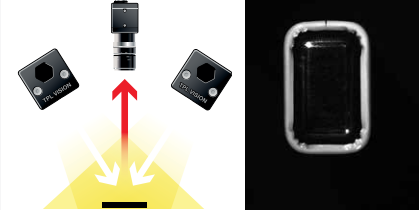
LIGHTING AREA	Distance: 0.5m		Distance: 1m		Distance: 2m	
	lux	Surface (mm)	lux	Surface (mm)	lux	Surface (mm)
EBAR5	5455 lux	200 x 300 mm	1520 lux	400 x 500 mm	375 lux	800 x 800 mm
EBAR10	8225 lux	200 x 325 mm	2685 lux	400 x 600 mm	710 lux	800 x 900 mm
EBAR15	9285 lux	200 x 450 mm	3520 lux	400 x 725 mm	1005 lux	800 x 1025 mm
EBAR20	9535 lux	200 x 575 mm	4080 lux	400 x 850 mm	1260 lux	800 x 1150 mm
EBAR25	9670 lux	200 x 700 mm	4435 lux	400 x 975 mm	1475 lux	800 x 1275 mm
EBAR30	9710 lux	200 x 825 mm	4590 lux	400 x 1100 mm	1650 lux	800 x 1400 mm
EBAR35	9765 lux	200 x 950 mm	4675 lux	400 x 1225 mm	1795 lux	800 x 1525 mm
EBAR40	9765 lux	200 x 1075 mm	4725 lux	400 x 1350 mm	1915 lux	800 x 1650 mm
EBAR45	9765 lux	200 x 1200 mm	4765 lux	400 x 1475 mm	2010 lux	800 x 1775 mm
EBAR50	9765 lux	200 x 1325 mm	4785 lux	400 x 1600 mm	2080 lux	800 x 1900 mm

Minimum guaranteed values (white lighting measures)

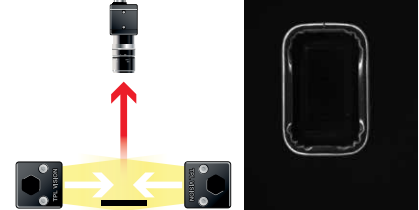
DIRECT LIGHTING



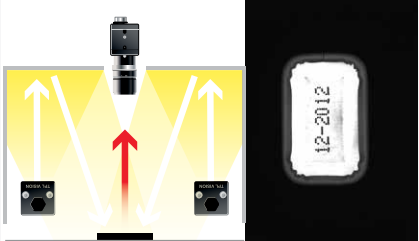
DIRECT INCLINED LIGHTING



DARKFIELD LIGHTING



DOMELIGHTING



TECHNICAL SPECIFICATIONS

	5	10	15	20	25	30	35	40	45	50
Electronics										
Power supply	24 VDC ±10%									
Functioning mode	Continuous or strobe according to wiring									
Maximum rising time	1.5ms									
Maximum falling time	1ms									
Bar wiring	Cable 5 meters – 4 wires									
Tube wiring	Cable 5 meters – 2 wires									
Max. Consumption (W)	7,5	15	22,5	30	37,5	45	52,5	60	67,5	75
Optics										
Colour	White, Red, Green, Blue, Infrared, UV 405									
Number of Leds	5	10	15	20	25	30	35	40	45	50
Lens by default	± 10°									
Mechanics										
Total length (mm)	306	431	556	681	806	931	1056	1181	1306	1431
Tube diameter (mm)	80									
Useful length (mm)	121	246	371	496	621	746	871	996	1121	1246
Useful width (mm)	39									
Weight (kg)	2,85	3,26	3,67	4,08	4,49	4,9	5,31	5,72	6,13	6,54
Bar body materials	Colourless anodized aluminum									
Tube materials	Tube : plexiglas / Fixing : stainless steel 316L									
Diffuser	Transparent diffuser									
Environment										
Operating temperature	-20°C / +60°C									
Storage temperature	0°C / +60°C									
IP protection	IP69K									
Labels	RoHS-CE-WEEE									

HOW TO BUILD YOUR REFERENCE

REQUIRED SETTINGS

EBAR	NUMBER OF LEDS	COLOUR	LENS/OPTIC ANGLE	DIFFUSER	IP
	5	WHI	7 ± 7°	TRANSPARENT	IP69K IP69K RATED
	10	630	10 ± 10°	DO OPAQUE	
	15	525	9-16 ± 9°/16°	DS SATIN	
	20	470	17 ± 17°	POL POLARIZER	
	25	850	25 ± 25°		
	30	405	NL NO LENS		
	35				
	40				
	45				
	50				

EXAMPLES :

- EBAR 5 WHITE LEDS ± 10° OPAQUE DIFFUSER IP69K RATED : → EBAR5-WH-10-DO-IP69K
- EBAR 15 RED LEDS ± 25° TRANSPARENT DIFFUSER IP69K RATED : → EBAR15-630-25-IP69K
- EBAR 30 BLUE LEDS ± 9°/16° POLARIZER IP69K RATED : → EBAR30-470-9-16-POL-IP69K

RESULTS :

INFORMATION ABOUT LENSES
NARROW ANGLE = GIVE PRIORITY TO LIGHTING POWER
WIDE ANGLE = GIVE PRIORITY TO HOMOGENEITY AND WIDE AREA



RELATED PRODUCTS

Ask for your add-ons, customized for the Essential EBAR FOOD :

- wiring
- safety glasses

MY CONTACT

.....

.....

.....

.....

.....

Features and presentations liable to modifications without prior notice. A-3 version, 06/2019 Edition

TPL VISION UK

Brenchley House - School Road - Charing - Kent TN27 0JW - UK
 Tel. +44 (0)1738 310 392 - contact@tpl-vision.co.uk

www.tpl-vision.com



Other available documents :

- PDF, DWG, DXF, IGS, STEP & X_Y DRAWINGS
- USER'S GUIDE

Essential EBAR FOOD

