

## DIFFUSE HIGH POWER LED LIGHT FOR FOOD INDUSTRY.

### ADVANTAGES OF THE BLBAR FOOD

- ✓ Resists to **washing pressure** up to **100 bars**
- ✓ Faces **water temperatures** up to **80° C**
- ✓ **Reduces bacterium accumulation** thanks to smooth surfaces
- ✓ **Avoids steam appearance** during thermal variations
- ✓ **Integrated cables** (5m)



Compliant with the food industry requirements, the Backlight BLBAR FOOD is a high power LED lighting solution, both diffuse and homogeneous. Equipped with a transparent tube, the Backlight BLBAR FOOD has a high protection level (IP69K) and perfectly fits production lines submitted to intense cleanings, where liquid and solid spatters are frequent.

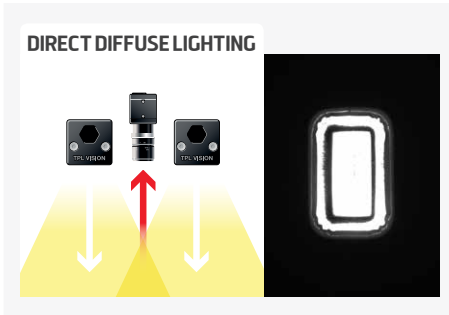
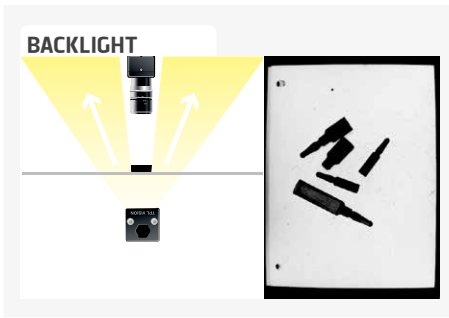
The Backlight BLBAR FOOD resists to washing pressure up to 100 bars, copes with water temperatures up to 80°C and avoids

steam appearance. Fully immersed, the transparent tube doesn't degrade the lighting quality. Thank to the Backlight BLBAR FOOD, power and homogeneity are perfectly preserved, for an optimized quality control.

Available in different colours and in multiple lengths, it can work either in continuous or in strobe mode.

|                | Surface lighting |              |
|----------------|------------------|--------------|
| <b>BLBAR5</b>  | 50000 lux        | 121 x 39 mm  |
| <b>BLBAR10</b> | 50000 lux        | 246 x 39 mm  |
| <b>BLBAR15</b> | 50000 lux        | 371 x 39 mm  |
| <b>BLBAR20</b> | 50000 lux        | 496 x 39 mm  |
| <b>BLBAR25</b> | 50000 lux        | 621 x 39 mm  |
| <b>BLBAR30</b> | 50000 lux        | 746 x 39 mm  |
| <b>BLBAR35</b> | 50000 lux        | 871 x 39 mm  |
| <b>BLBAR40</b> | 50000 lux        | 996 x 39 mm  |
| <b>BLBAR45</b> | 50000 lux        | 1121 x 39 mm |
| <b>BLBAR50</b> | 50000 lux        | 1246 x 39 mm |

Minimum guaranteed values (white lighting measures)



## TECHNICAL SPECIFICATIONS

|                       | 5                                                | 10   | 15   | 20   | 25   | 30  | 35   | 40   | 45   | 50   |
|-----------------------|--------------------------------------------------|------|------|------|------|-----|------|------|------|------|
| <b>Electronics</b>    |                                                  |      |      |      |      |     |      |      |      |      |
| Power supply          | 24 VDC ±10%                                      |      |      |      |      |     |      |      |      |      |
| Functioning mode      | Continuous or strobe according to wiring         |      |      |      |      |     |      |      |      |      |
| Maximum rising time   | 1.5ms                                            |      |      |      |      |     |      |      |      |      |
| Maximum falling time  | 1ms                                              |      |      |      |      |     |      |      |      |      |
| Bar wiring            | Cable 5 meters – 4 wires                         |      |      |      |      |     |      |      |      |      |
| Tube wiring           | Cable 5 meters – 2 wires                         |      |      |      |      |     |      |      |      |      |
| Max. Consumption (W)  | 7,5                                              | 15   | 22,5 | 30   | 37,5 | 45  | 52,5 | 60   | 67,5 | 75   |
| <b>Optics</b>         |                                                  |      |      |      |      |     |      |      |      |      |
| Colour                | White, Red, Green, Blue, Infrared                |      |      |      |      |     |      |      |      |      |
| Number of Leds        | 5                                                | 10   | 15   | 20   | 25   | 30  | 35   | 40   | 45   | 50   |
| <b>Mechanics</b>      |                                                  |      |      |      |      |     |      |      |      |      |
| Total length (mm)     | 306                                              | 431  | 556  | 681  | 806  | 931 | 1056 | 1181 | 1306 | 1431 |
| Tube diameter (mm)    | 80                                               |      |      |      |      |     |      |      |      |      |
| Useful length (mm)    | 121                                              | 246  | 371  | 496  | 621  | 746 | 871  | 996  | 1121 | 1246 |
| Useful width (mm)     | 39                                               |      |      |      |      |     |      |      |      |      |
| Weight (kg)           | 2,85                                             | 3,26 | 3,67 | 4,08 | 4,49 | 4,9 | 5,31 | 5,72 | 6,13 | 6,54 |
| Bar body materials    | Colourless anodized aluminum                     |      |      |      |      |     |      |      |      |      |
| Tube materials        | Tube : plexiglas / Fixing : stainless steel 316L |      |      |      |      |     |      |      |      |      |
| Diffuser              | Opaque diffuser                                  |      |      |      |      |     |      |      |      |      |
| <b>Environment</b>    |                                                  |      |      |      |      |     |      |      |      |      |
| Operating temperature | -20°C / +60°C                                    |      |      |      |      |     |      |      |      |      |
| Storage temperature   | 0°C / +60°C                                      |      |      |      |      |     |      |      |      |      |
| IP protection         | IP69K                                            |      |      |      |      |     |      |      |      |      |
| Labels                | RoHS-CE-WEEE                                     |      |      |      |      |     |      |      |      |      |

## RELATED PRODUCTS

Ask for your add-ons, customized for the Backlight BLBAR FOOD :

- wiring
- safety glasses

## MY CONTACT

.....

.....

.....

.....

.....

## HOW TO BUILD YOUR REFERENCE

### REQUIRED SETTINGS

| BLBAR | NUMBER OF LEDS | COLOUR                       | IP                 |
|-------|----------------|------------------------------|--------------------|
|       | 5              | WHI <input type="checkbox"/> | IP69K* IP69K RATED |
|       | 10             | 630 <input type="checkbox"/> |                    |
|       | 15             | 525 <input type="checkbox"/> |                    |
|       | 20             | 470 <input type="checkbox"/> |                    |
|       | 25             | 850 <input type="checkbox"/> |                    |
|       | 30             |                              |                    |
|       | 35             |                              |                    |
|       | 40             |                              |                    |
|       | 45             |                              |                    |
|       | 50             |                              |                    |

**EXAMPLES:**

BLBAR 5 WHITE LEDS IP69K RATED: →

BLBAR 15 RED LEDS IP69K RATED: →

BLBAR 30 BLUE LEDS IP69K RATED: →

**RESULTS:**

BLBAR5-WH-IP69K

BLBAR15-630-IP69K

BLBAR30-470-IP69K

Features and presentations liable to modifications without prior notice. A-1 version, 2019/06 Edition

### TPL VISION UK

Brenchley House - School Road - Charing - Kent TN27 0JW - UK  
Tel. +44 (0)1738 310 392 - contact@tpl-vision.co.uk

www.tpl-vision.com



### Other available documents :

- PDF, DWG, DXF, IGS, STEP & X\_Y DRAWINGS
- USER'S GUIDE

### Backlight BLBAR FOOD

