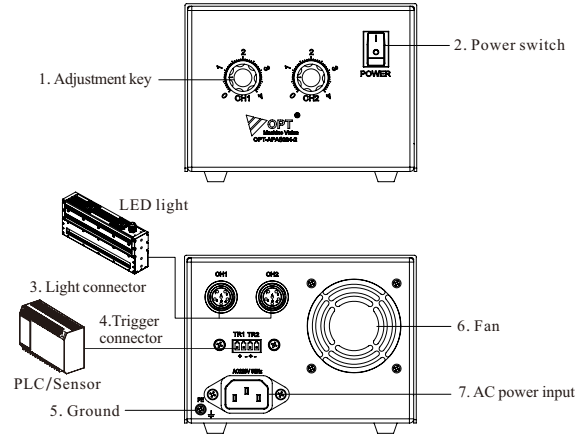
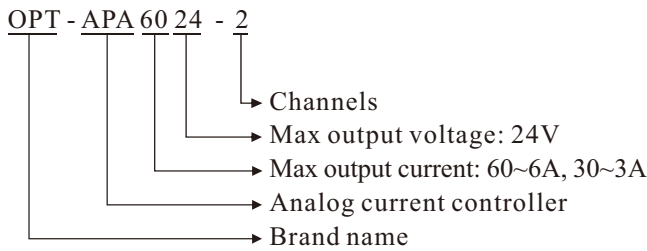


APA High Power Analog Current Controller



Selection Guide



No.	Model	Channels	Compatible Light
1	APA6024-2	2	0.8~6A LED light with 6P connector
2	APA3024-2	2	0.8~3A LED light with 6P connector

Product Features

- 1** Autosense for rated current of LED light
- 2** Stepless adjustment for output current
- 3** Trigger signal input: connect an external signal source (e.g. a cameratrigger signal) to strobe the LED light, and extend life span of light

Device Overview

No.	Item	Description
1	Adjustment key	One key per channel, clockwise rotation to increase intensity, anti-clockwise rotation to decrease intensity
2	Power switch	To turn the controller on/off
3	Light connector	For connection to LED light with 6P connector
4	Trigger connector	For connection with an external trigger source
5	Ground	Ground protection
6	Fan	For cooling of the device
7	AC power input	Input voltage AC100~120V or AC200~240V, switching via internal switch

Description of 6P Connector

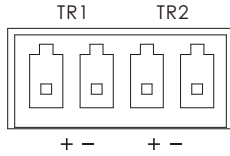
Pin	Pin Definition
1	Light+
2	Light-
3	Fan+
4	Fan-
5	Res
6	Res

Parameters

Item	Parameter	Description
Input voltage	AC100~120V or AC200~240V	Via internal switch
Lighting mode	Continuous on / Strobe	
Autosense of light rated current	APA3024 for 800mA~3A light APA6024 for 800mA~6A light	
Intensity control	Stepless	Via adjustment key
Trigger way	Switching value (ON/OFF)	
Trigger delay time	≤100μs	
Trigger input	Synchronous strobe with external signal	
Trigger frequency	Max 1KHz	
Channels	2CH	
Output power	APA3024-2	72W/1CH 144W/2CH
	APA6024-2	144W/1CH 288W/2CH
Hi-Pot test	AC1500V 1min	Leak current <10mA
Insulation resistance	DC500V	>20MΩ
Work temperature	-5~50℃	
Standby power consumption	≤11 W	
Size(L x W x H)	APA3024-2	136 x 270.5 x 104.5mm
	APA6024-2	136 x 305.8 x 104.5mm
Weight (kg)	APA3024-2	1.8
	APA6024-2	2.1

Trigger Connector

OPT-APA6024-2 has two channels. Each channel has “+” and “-” input ports. Please refer to drawing of trigger connector as below:



Work Mode Setting

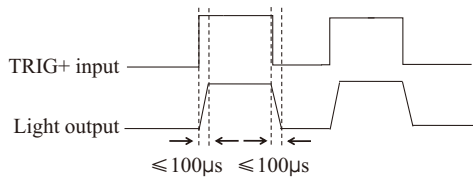
APA6024-2 controller has ON and OFF two work modes, set via internal switch in controller. Users can not set by themselves. Refer below table for details:

TS	Work Mode	Description
up	ON	TRIG+ and TRIG- disconnected, the light is on; TRIG+ and TRIG- connected, the light is off.
down	OFF	TRIG+ and TRIG- disconnected, the light is off; TRIG+ and TRIG- connected, the light is on.

Sequence Chart

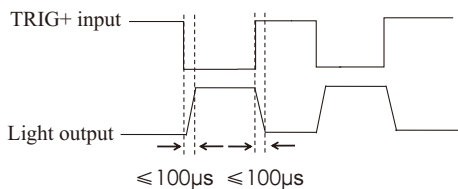
ON Mode

When connected to trigger signal, TRIG+ and TRIG- disconnected, the light is on; TRIG+ and TRIG- connected, the light is off.

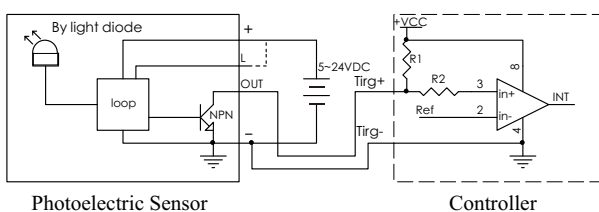


OFF Mode

When connected to trigger signal, TRIG+ and TRIG- disconnected, the light is off; TRIG+ and TRIG- connected, the light is on.



Trigger Wiring Diagram



Dimensional Drawings [mm]

