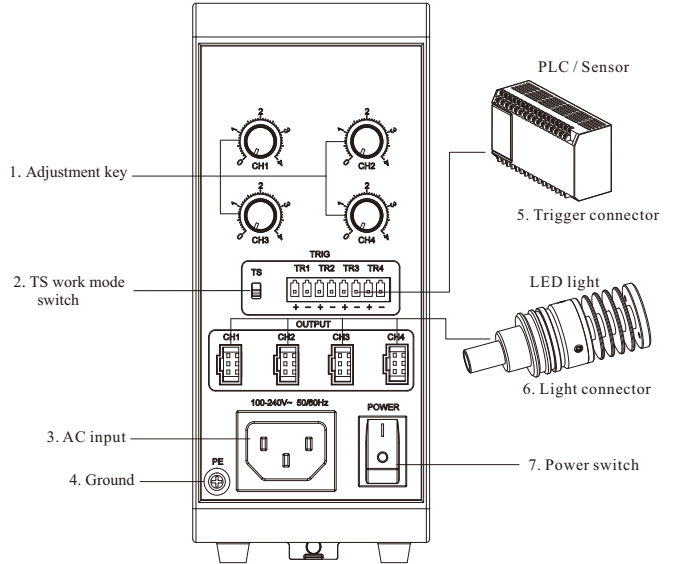


## Analog Current Controller For Spot Light

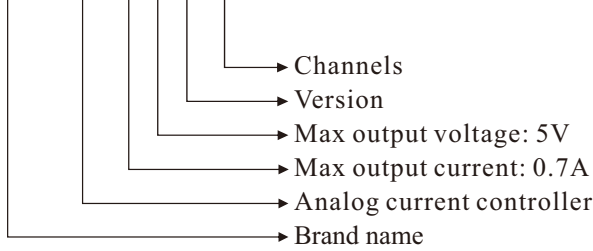


Remark: Above data is for APA0705F-4. For APA0705F-1/2/3, the quantity of intensity adjustment keys, external trigger connectors and light connectors are 1, 2, 3 respectively.



### Selection Guide

**OPT - APA 0705 F - 4**



Model	Channels	Compatible Light
OPT-APA0705F-1	1	0.7A/5V LED light
OPT-APA0705F-2	2	0.7A/5V LED light
OPT-APA0705F-3	3	0.7A/5V LED light
OPT-APA0705F-4	4	0.7A/5V LED light

### Product Features

- Manual stepless intensity control
- Trigger signal input: connect an external signal source (e.g. a cameratrigger signal) for synchronized strobing of the illumination device
- Easy to install: screw and DIN rail mounting available

### Device Overview

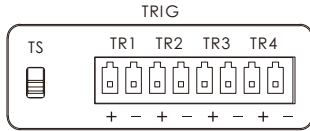
No	Item	Description
1	Adjustment key	One key per channel; Rotate it in clockwise, the intensity increase; rotate it anti-clockwise, the intensity decrease
2	TS work mode switch	To switch between "ON" and "OFF" trigger mode
3	AC power input	100 - 240 V AC, 50/60 Hz
4	Ground	Ground protection
5	Trigger connector	For connection with an external trigger source
6	Light connector	For 0.7A/5V LED light
7	Power	To turn the controller on/off

### Parameters

Item	Parameter	Description
Input voltage	AC100~240V	50/60Hz
Output current	0~0.7A	Continuous adjustment
Lighting mode	Continuous ON / Strobe	
Intensity control	Stepless	Via intensity adjustment key
External trigger	Synchronized strobe with external trigger signal	
Trigger way	Switching value (ON / OFF)	
Trigger delay time	≤ 80μs	
External trigger frequency	Max 1 kHz	
ON/OFF mode switching	Support	Via the TS switch to change the mode between ON and OFF
Output power	3.5W/CH	
Standby power consumption	APA0705F-1	<3.5W
	APA0705F-2	<3.6W
	APA0705F-3	<4.0W
	APA0705F-4	<4.5W
Hi-Pot test	AC1500V 1min	Leak current <10mA
Insulation resistance	DC500V	>20MΩ
Working temp.	-5°C~50°C	
Size (L x W x H)	73.5 x 129.5 x 166mm	
Weight (kg)	APA0705F-1/2	0.7
	APA0705F-3/4	0.7

### Trigger Connector

APA0705F-1/2/3/4 has 1, 2, 3, or 4 channels. Each channel has two pins as input: "+" and "-". Below drawing is the trigger connector of APA0705F-4.



### Work Mode Set

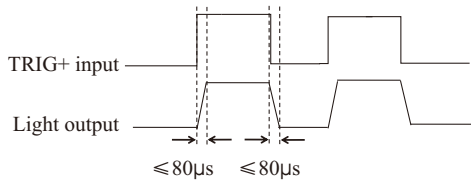
Analog controller has ON and OFF two work modes, can switch via TS work mode switch. Please refer to the table below for details:

TS Switch	Work Mode	Description
Up	ON	TRIG+ and TRIG- disconnected, the light is on; TRIG+ and TRIG- connected, the light is off.
Down	OFF	TRIG+ and TRIG- disconnected, the light off; TRIG+ and TRIG- connected, the light is on.

### Trigger Sequence Chart

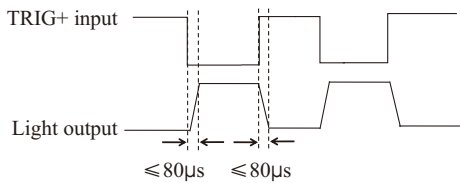
#### ON Mode:

When connected to external trigger signal, if TRIG + and TRIG - disconnected, the light is on; if TRIG + and TRIG - connected, the light is off.

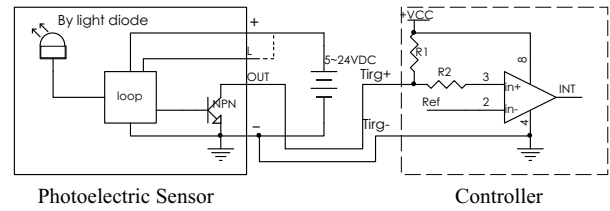


#### OFF Mode:

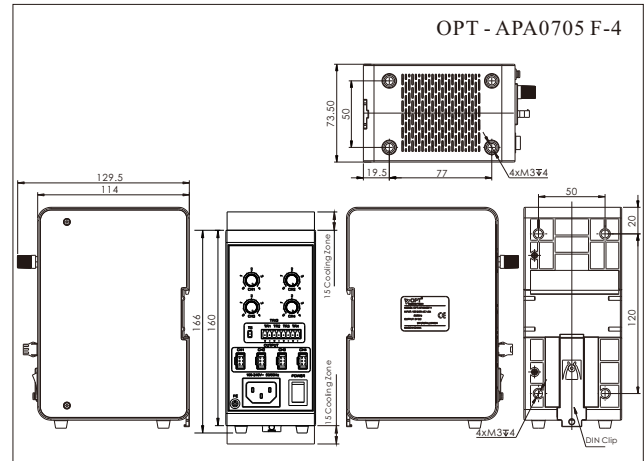
When connected to external trigger signal, if TRIG + and TRIG - disconnected, the light is off; if TRIG + and TRIG - connected, the light is on.



### Trigger Wiring Diagram



### Dimensional Drawing [mm]



Note: The sizes of APA0705F-1/2/3/4 controllers are the same