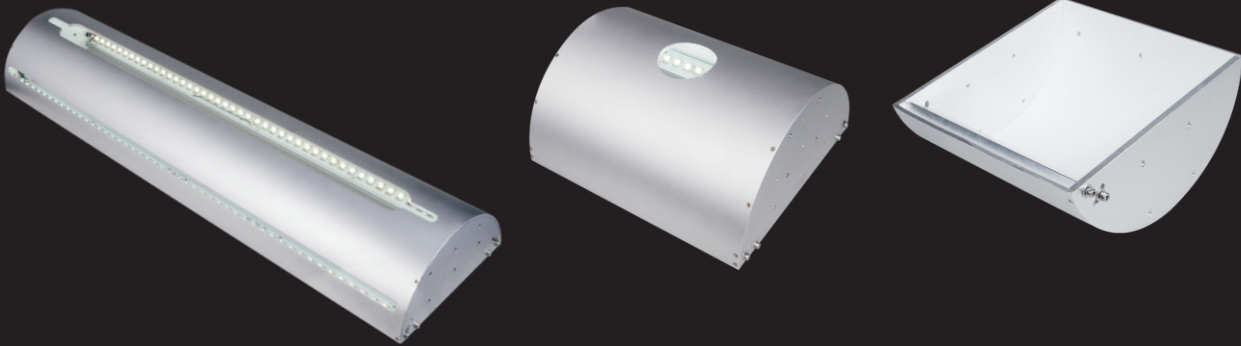


Vault Lights OPT-LIU series



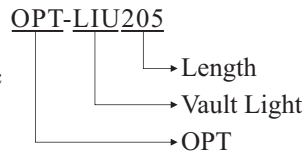
Product Features

- 1 Provides uniform illumination
- 2 Combines the features of dome lights and bar lights
- 3 Opening on the top for the easy installation of area-array cameras or line scan cameras

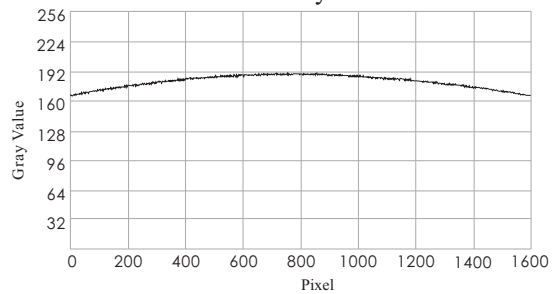
Application Cases

- ◆ Surface inspection of tobacco boxes
- ◆ Inspection of housings of electronic parts for defects and dirt
- ◆ Line scan AOI inspection
- ◆ Large field of view surface inspection

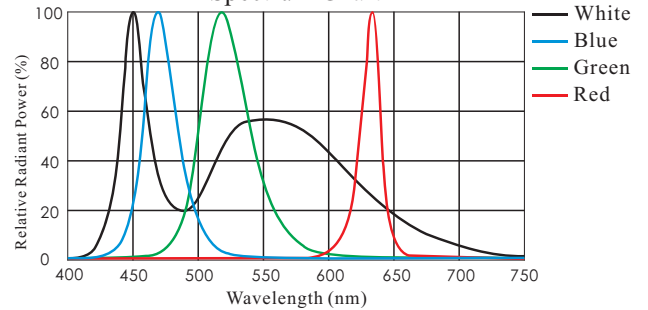
Selection Guide



Uniformity Chart



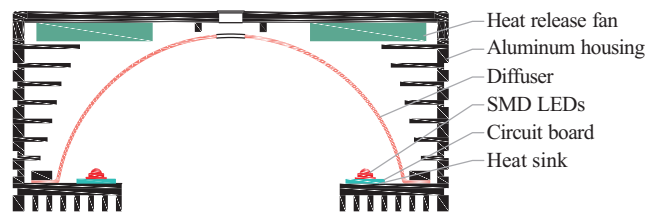
Spectrum Chart



Customization Options

- Color
- Size
- Mount method
- Multi-angle
- Light combination
- Individual control of different sections

Section Structure Drawing



Application Example

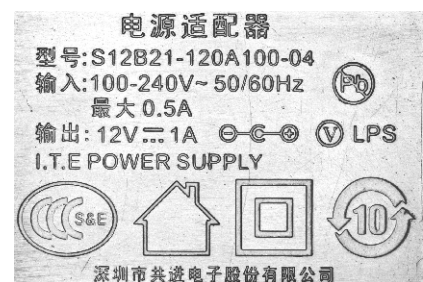
Inspection of characters on adapter



Original Image



Illuminated



Result Image

Model Table

No.	Model	Output ●	Output ○●●	Channel	Recommended controller
1	OPT-LIU205	0.8A/19.2W	1.2A/28.8W	2	OPT-DPA1024E
2	OPT-LIU285	3.2A/76.8W	4.8A/115.2W	1	OPT-DPA6024
3	OPT-LIU362	2.4A/57.6W	4A/96W	1	OPT-DPA6024
4	OPT-LIU423	3.2A/76.8W	7A/168W	2	OPT-DPA6024
5	OPT-LIU500	3.2A/76.8W	4.8A/115.2W	2	OPT-DPA6024
6	OPT-LIU600	3.2A/76.8W	5.6A/134.4W	2	OPT-DPA6024

Dimensional Drawings [mm]

