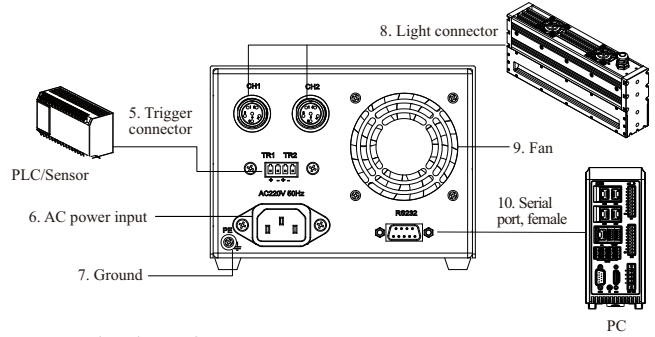
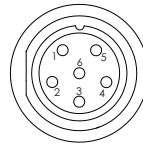


# High Power Digital Current Controller



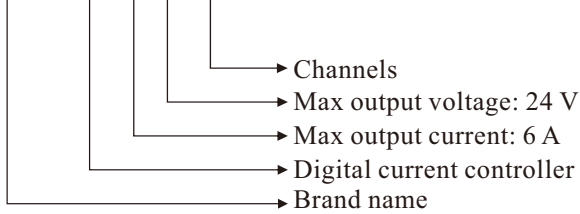
## Description for 6P Connector



Pin	Pin Definition
1	Light+
2	Light-
3	Fan+
4	Fan-
5	Res
6	Res

## Selection Guide

OPT - DPA 60 24 - 2

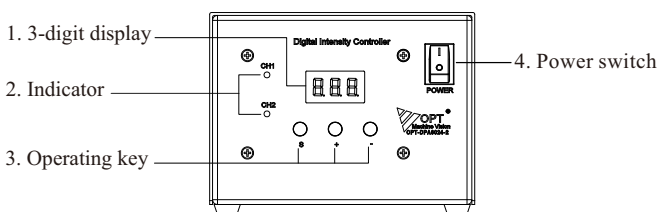


No.	Item	Description
1	3-digit screen	The first number indicates the channel and the other 2 numbers show intensity value
2	Indicator	Shows the status of the channel, ON - active, OFF - inactive.
3	Operating key	S: Set/check button, +: plus, -: minus
4	Power switch	Turns the controller on/off
5	Trigger connector	For connection with an external trigger
6	AC power input	100 - 120 V AC or 200 - 240 V AC
7	Ground	Ground protection
8	Light connector	For the connection with OPT lights with 6P connector
9	Fan	For cooling
10	Serial port, female	For the connection with PC

## Product Features

- 1** 256 intensity levels
- 2** Short circuit protection
- 4** Communicate with PC via RS232 interface.
- 3** Manual control for the intensity on the controller available
- 5** Trigger signal input: connect an external signal source (e.g. a camera trigger signal) for synchronized strobe of the illumination device
- 6** The controller settings are stored within the device, even when switched off.

## Device Overview

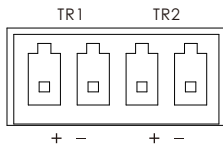


## Parameters

Item	Parameter	Description
Input Voltage	100 - 120 V AC or 200 - 240 V AC	Switching via internal switch
Lighting mode	Continuous ON / Strobe	
Autosense of light rated current	For 100mA-6A OPT light with 6P connector	
Intensity control	256 levels	Via operating key or DEMO software
Trigger way	Switching value (ON / OFF)	
Trigger input	Synchronous strobe with trigger signal	
Short circuit protection	Yes	activate when output circuit shorted
Trigger delay time	≤100μs	
Trigger frequency	Max 1KHz	
Channels	2 CH	
Output power	144W/CH	2 CH total output ≤288W
Hi-Pot test	AC1500V 1min	Leak current <10mA
Insulation resistance	DC500V	>20MΩ
Standby power consumption	≤11W	
Size (L x W x H)	136 x 326 x 104.5mm	
Weight(kg)	2.1	

### Trigger Port

DPA6024- 2 has two trigger channels, each channel has “+” and “-“ pins as input. Please refer to the drawing as below:



### Work Mode Setting

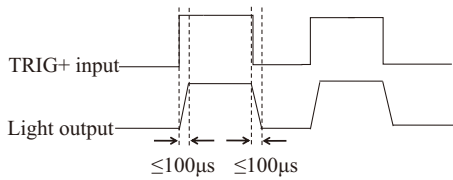
This controller has ON and OFF 2 kinds work modes, set via internal switch in the controller, can't be set by customer. Refer to below chart for details:

Work Mode	Description
ON	TRIG+ and TRIG- disconnected, the light is on; TRIG+ and TRIG- connected, the light is off.
OFF	TRIG+ and TRIG- disconnected, the light is off; TRIG+ and TRIG- connected, the light is on.

### Trigger Sequence Chart

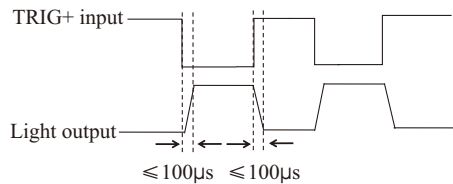
#### ON Mode

When connected to trigger signal, TRIG+ and TRIG- disconnected, the light is on; TRIG+ and TRIG- connected, the light is off.

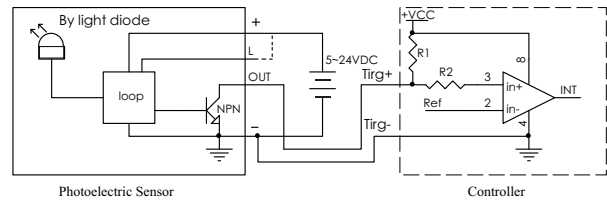


#### OFF Mode

When connected to trigger signal, TRIG+ and TRIG- disconnected, the light is off; TRIG+ and TRIG- connected, the light is on.



### Trigger Wiring Diagram



### Dimensional Drawing [mm]

