

Model Table

No.	Model	Color	Output	Channel	Recommended controller
1	OPT-LST82	○●●	0.4A/9.6W	1	OPT-DPA1024E
2	OPT-LST142	○●●	0.8A/19.2W	1	OPT-DPA6024
3	OPT-LST202	○●●	1.2A/28.8W	1	OPT-DPA6024
4	OPT-LST262	○●●	1.6A/38.4W	1	OPT-DPA6024
5	OPT-LST322	○●●	2A/48W	1	OPT-DPA6024
6	OPT-LST382	○●●	2.4A/57.6W	1	OPT-DPA6024
7	OPT-LST442	○●●	2.8A/67.2W	1	OPT-DPA6024
8	OPT-LST502	○●●	3.2A/76.8W	1	OPT-DPA6024
9	OPT-LST562	○●●	3.6A/86.4W	1	OPT-DPA6024
10	OPT-LST622	○●●	4A/96W	1	OPT-DPA6024
11	OPT-LST682	○●●	4.4A/105.6W	1	OPT-DPA6024
12	OPT-LST742	○●●	4.8A/115.2W	1	OPT-DPA6024
13	OPT-LST802	○●●	5.2A/124.8W	2	OPT-DPA6024
14	OPT-LST862	○●●	5.6A/134.4W	2	OPT-DPA6024

No.	Model	Color	Output	Channel	Recommended controller
15	OPT-LST982	○●●	6.4A/153.6W	2	OPT-DPA6024
16	OPT-LST1042	○●●	6.8A/163.2W	2	OPT-DPA6024
17	OPT-LST1102	○●●	7.2A/172.8W	2	OPT-DPA6024
18	OPT-LST1222	○●●	8A/192W	2	OPT-DPA6024
19	OPT-LST2422	○●●	16A/384W	4	OPT-DPA6024
20	OPT-LST122	●	0.4A/9.6W	1	OPT-DPA1024E
21	OPT-LST222	●	0.8A/19.2W	1	OPT-DPA6024
22	OPT-LST322	●	1.2A/28.8W	1	OPT-DPA6024
23	OPT-LST522	●	2A/48W	1	OPT-DPA6024
24	OPT-LST622	●	2.4A/57.6W	1	OPT-DPA6024
25	OPT-LST722	●	2.8A/67.2W	1	OPT-DPA6024
26	OPT-LST822	●	3.2A/76.8W	1	OPT-DPA6024
27	OPT-LST1222	●	4.8A/115.2W	2	OPT-DPA6024
28	OPT-LST2422	●	9.6A/230.4W	3	OPT-DPA6024

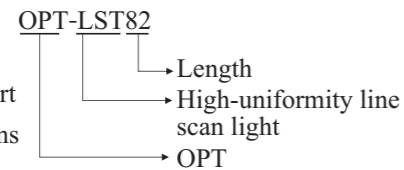
Product Features

- Special diffuser creates uniform illumination
- High-density LED array and high-uniformity diffuser help to reduce speckles of reflective and uneven surfaces

Application Cases

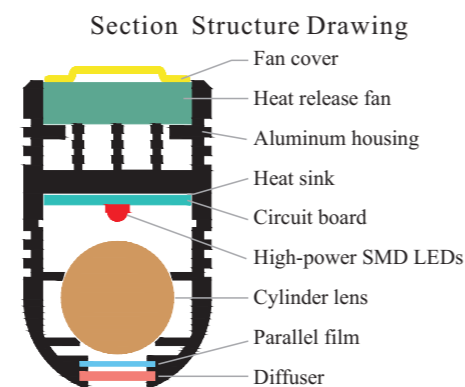
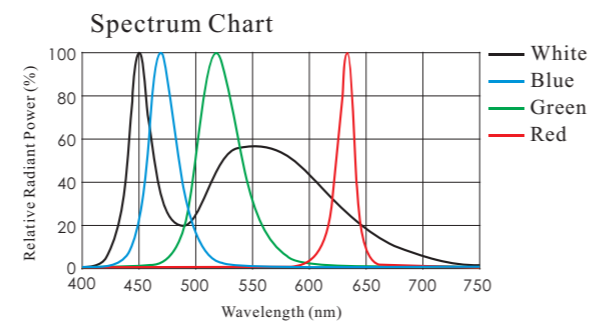
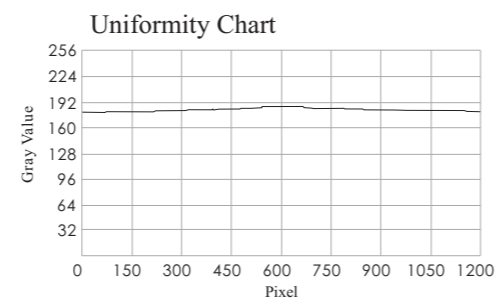
- Line scan application
- Surface inspection of film and glass for scratches and dirt
- High-speed AOI applications

Selection Guide

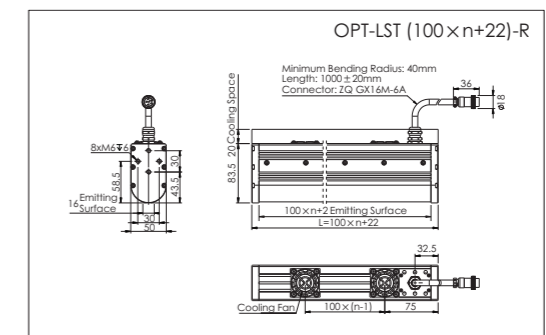
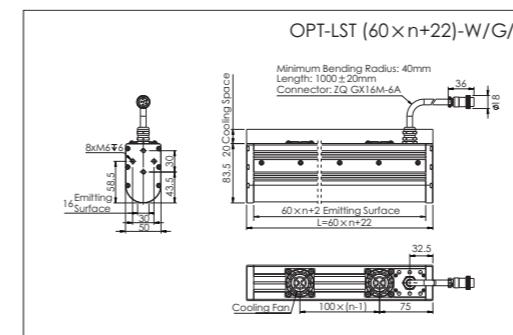


Customization Options

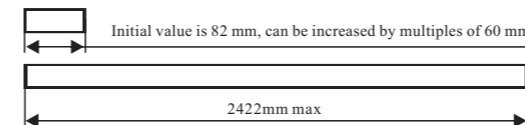
- Color
- Connector
- Size
- Mount method
- Heat release method
- Emitting surface



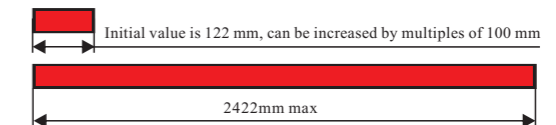
Dimensional Drawings [mm]



Customizable length



Length of white, green, and yellow lights can be increased by multiples of 60 mm to 2422 mm, initial value is 82 mm. Other lengths are available as customized versions.
Remark: please refer to the parameter chart for the number of light channels.



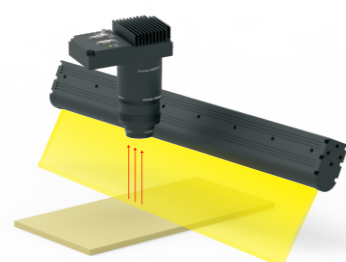
Length red lights can be increased by multiples of 100 mm to 2422 mm, initial value is 122 mm. Other lengths are available as customized versions.
Remark: please refer to the parameter chart for the number of light channels.

Application Example

Inspected item : Surface inspection of cans



Original Image



Illuminated



Result Image