

# Digital Fiber Spot Lights OPT-DOFP Series



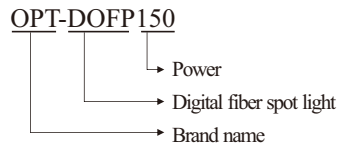
## Product Features

- 1 Illuminance up to 2500K lux at zero working distance
- 2 Integrated design for LED light and controller
- 3 Supporting both Ethernet and RS232 communication
- 4 Supporting both programmable trigger mode and external trigger mode, trigger frequency up to 50KHz

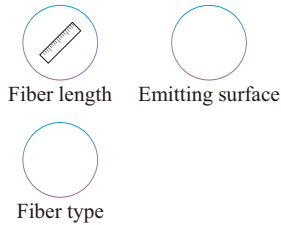
## Application Cases

- ◆ Replacement of halogen lights
- ◆ Illumination in the medical field
- ◆ Semiconductor equipment
- ◆ Microscopes
- ◆ General industrial applications

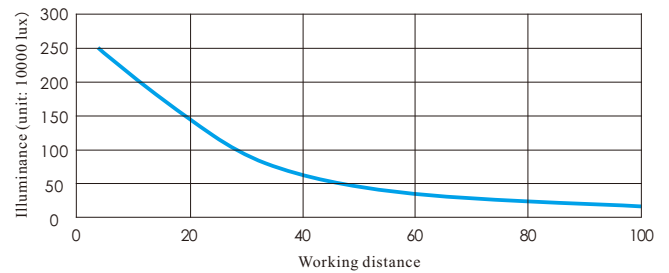
## Selection Guide



## Customization Options

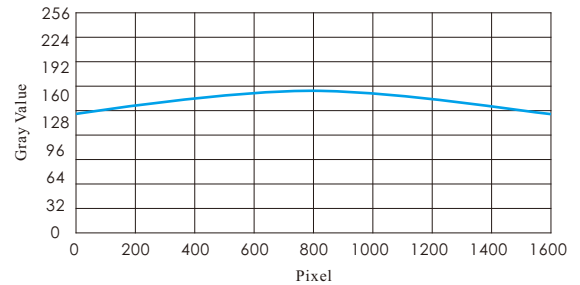


## Illuminance changing with working distance



Remarks:  
The light equipped with a 1m fiber, emitting surface 6.5mm diameter. Above data is from experiment, only for your reference.

## Uniformity Chart



Remark:  
Data above is the testing result of OPT-DOFP150 worked with telecentric lens at 20mm field of view, only for your reference.

## Application Example

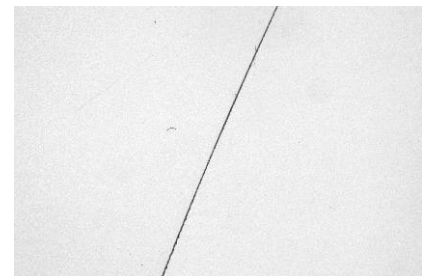
### Mobile phone LCD screen defects detection



Original image



Illuminated



Result image

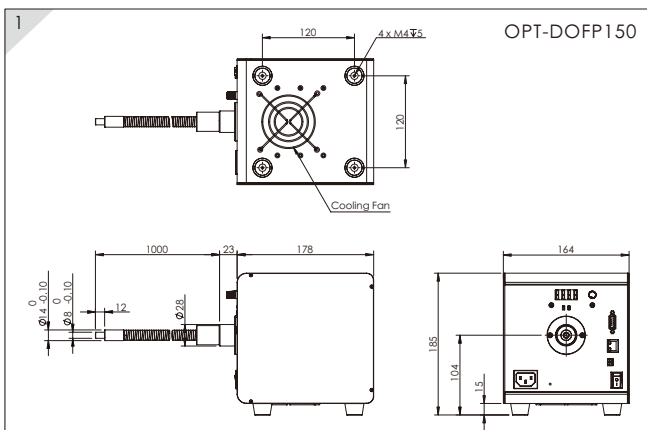
### Model Table

No.	Model	Input Voltage ○	Output Power ○
1	OPT-DOFP150	110~240V	150W

### Parameters

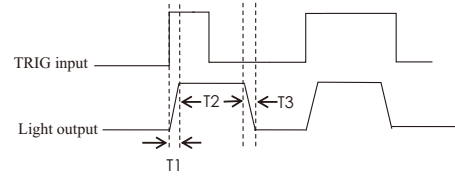
Item	Parameter	Details
Input voltage	AC100-240V	50/60Hz
Light intensity	256 levels	Adjust by the intensity adjust key or DEMO software
Short circuit protection	yes	Protection shuts down the related channel and "ER2" appears on the display
Over current protection	yes	When the current is over 10% of set value the related channel is shut down and "ER1" appears on the display
Trigger mode	level trigger	High level: 5-24V; Low level: 0-2V
Normal trigger mode	256 levels	
High-intensity trigger mode	8A per channel	
normal trigger pulse width	1μs-30s	Adjusted by the intensity adjustment key or via software, the time unit only can be set via DEMO software
High-intensity trigger pulse width	0.01-5.00ms	Adjusted by the intensity adjustment key or via software
Programmable trigger mode	yes	Both intensity and pulse width can be set
Response time	≤15μs	
Trigger frequency	50KHz	
Output power	120W	
Communication	Rs232 / Ethernet	
Standby power	18.2W	input 220V
Hi-pot test	AC1500V 1Min	Leak current < 10mA
Insulation resistance	DC500V	Insulation resistance > 20MΩ
Working temperature	-5℃~50℃	
Size (mm)	164 x 178 x 186	
Weight (kg)	3.72	

### Dimensional Drawing (mm)

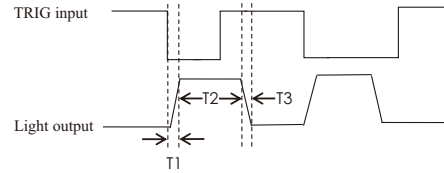


### Sequence Diagram

#### Rising edge trigger



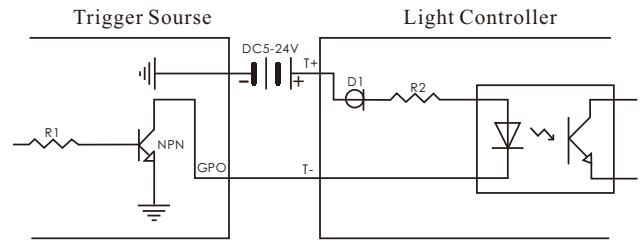
#### Falling edge trigger



Remarks: T1 is the OFF to ON response time; T2 is the trigger pulse width, T3 is the ON to OFF response time;  $T1 \leq 15\mu s$ , T2 can be set in the range of 1μs ~30s,  $T3 \leq 5\mu s$

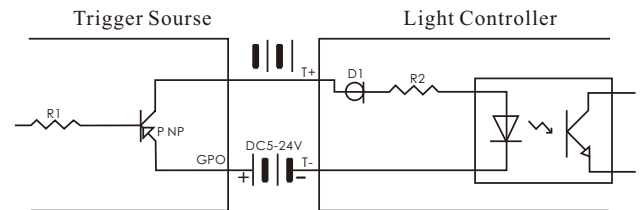
### Trigger Connection Reference

#### (1) NPN Connection



Trig Input Circuit For NPN Type Trigger

#### (2) PNP Connection



Trig Input Circuit For PNP Type Trigger