



Model Table

No.	Model	Color	Output	Channel	Recommended controller
1	OPT-LSC142	○●●	0.8A/19.2W	1	OPT-DPA6024
2	OPT-LSC202	○●●	2.4A/57.6W	1	OPT-DPA6024
3	OPT-LSC262	○●●	1.6A/38.4W	1	OPT-DPA6024
4	OPT-LSC322	○●●	2.0A/48W	1	OPT-DPA6024
5	OPT-LSC122	●	0.4A/9.6W	1	OPT-DPA6024
6	OPT-LSC222	●	1.2A/28.8W	1	OPT-DPA6024
7	OPT-LSC322	●	1.2A/28.8W	1	OPT-DPA6024

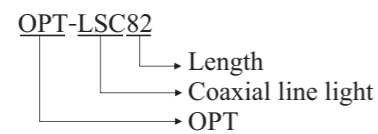
Product Features

- 1 Spectroscope design for maximum light transmission
- 2 High-intensity LEDs with high brightness, ideal for high-speed inspection
- 3 Best suited for a consistent inspection line, especially for print inspection with highly reflective surfaces

Application Cases


- ◆ For illumination of line scan cameras
- ◆ Inspection of glass for breakage and impurity
- ◆ High-speed printing inspection

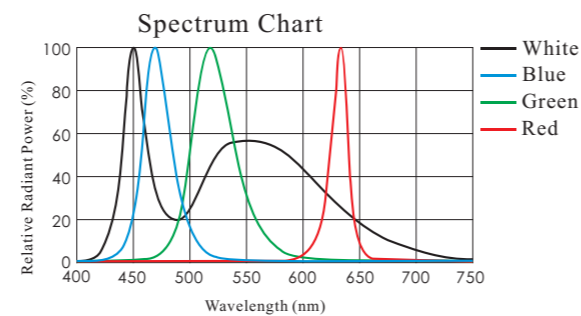
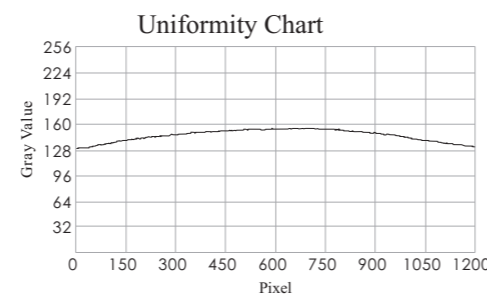
Selection Guide



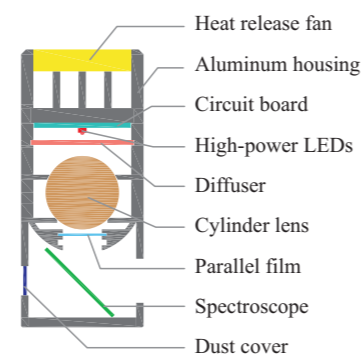
Customization Options

- Color
- Connector
- Size
- Mount method
- Heat release method
- Emitting surface

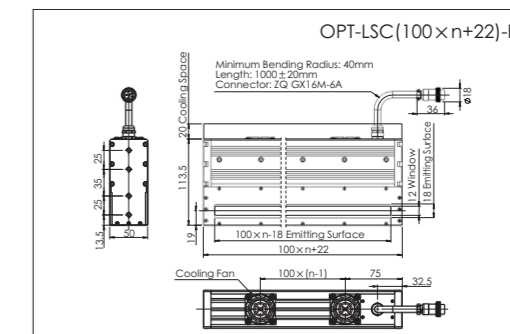
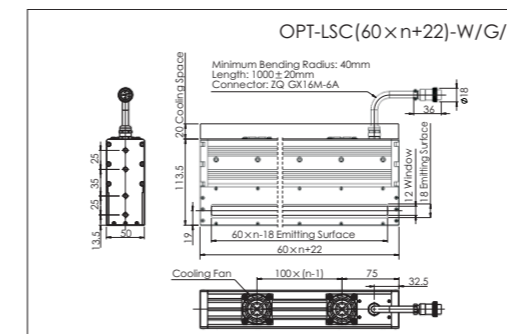




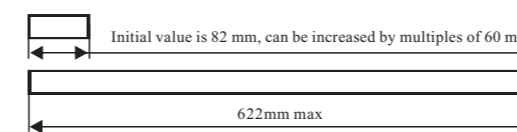
Section Structure Drawing



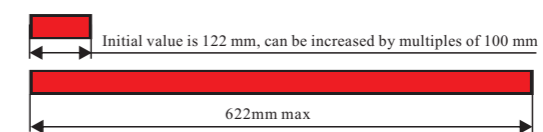
Dimensional Drawings [mm]



Customizable length



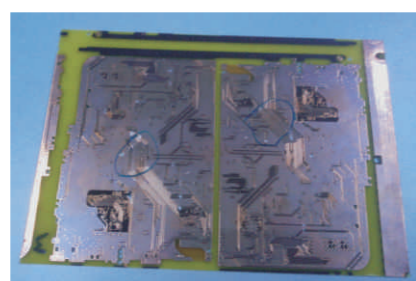
Length of white, green, and yellow lights can be increased by multiples of 82 mm to 622 mm, initial value is 60 mm. Other lengths are available as customized versions.
Remark: please refer to the parameter chart for the number of light channels.



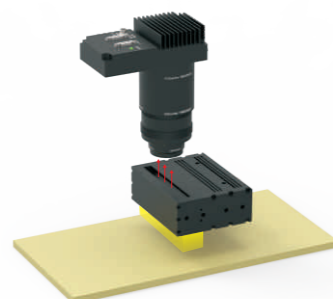
Length of red lights can be increased by multiples of 100 mm to 622 mm, initial value is 122 mm. Other lengths are available as customized versions.
Remark: please refer to the parameter chart for the number of light channels.

Application Example

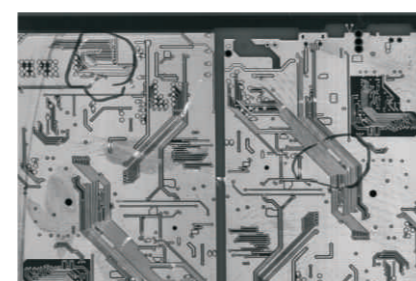
Printed Circuit Board (PCB) inspection



Original Image



Illuminated



Result Image